

**Honeywell**



## **AreaRAE Pro** **Wireless, transportable** **area monitor**

Remote visibility on more threats than ever — for an enhanced level of real-time situational awareness.

# Superior wireless, transportable multi threat area monitoring for fire, military and hazmat teams

AreaRAE Pro is a transportable multi-threat area monitor that simultaneously detects toxic and combustible gases, Volatile Organic Compounds (VOCs), radiation, and meteorological factors that affect the speed, direction and behavior of gas – for enhanced situational awareness. It works with Honeywell’s remote monitoring software, so you can see the real-time threat readings, alarm status, location of each AreaRAE Pro and much more – and make faster, more informed safety decisions.





## Multiple threats. Multiple applications

AreaRAE Pro is designed for the needs of:

- **Emergency responders**
- **Fire departments**
- **Law enforcement**
- **Hazmat teams**
- **Military teams**
- **Civil support teams**

Whether you're carrying the monitor into a hot zone, setting up a perimeter or deploying it at a public venue — for hours, days or weeks at a time — count on the AreaRAE Pro to give you the right hazard intelligence so you can ensure the safety of your teams and the general public.

## Remote monitoring from a safe location — for real-time situational awareness

AreaRAE Pro sends gas, radiation, meteorological readings and location data to real-time monitoring software, so you can see the status of each monitor — plus other wireless gas detectors in your fleet — all in an easy-to-use, map-based display, accessible from any computer with an internet connection. That means you can instantly determine the location and severity of a threat, while coordinating joint operations and sharing data with other teams.

### Don't have an internet connection on the scene?

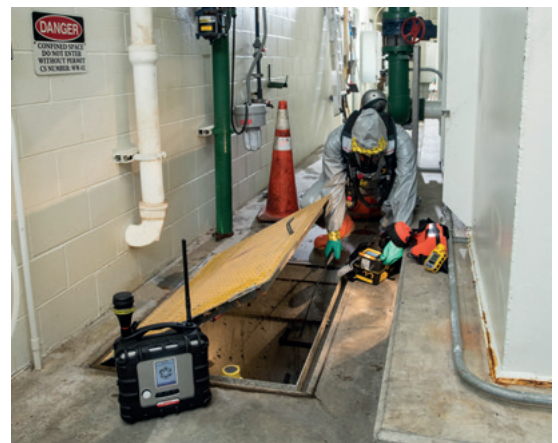
Use our ruggedized military-spec laptop as a turnkey host, enabling you to monitor readings from a safe position up to 2 miles / 3 kilometers away. Depending on the environment the wireless communication can be supported by the use of our RAELink3 portable wireless router.



## Pioneered by RAE Systems, continued by Honeywell

AreaRAE Pro builds on the legacy expertise of Honeywell RAE Systems, which is the pioneer of transportable, multi-threat area monitors for civil defense, hazmat and first response teams. AreaRAE Pro now carries the Honeywell name — a reminder that your monitor comes from the global leader in safety technology and protective equipment.

Hailing from the thousands of AreaRAE monitors in use by municipal, state and federal teams — for applications from presidential inaugurations to world sports events — AreaRAE Pro features proven, reliable monitoring technology that you can trust.



# Multiple sensors in a single versatile device



With AreaRAE Pro, you don't have to choose one sensor at the expense of another. Instead, the monitor gives you the flexibility to detect multiple threats for better situational awareness. You get:

## Seven sensors for toxic and combustible gas

Choose seven sensors based on your needs, and switch them out whenever your needs change. Whether you're monitoring for a Radiological attack at a public venue or entering a clandestine drug lab, you can select from more than 20 sensors for toxic gases, oxygen and multiple combustible gases at the lower explosive limit (LEL). Need to monitor

for a gas that's not in your standard configuration? With 7 sensor slots available, you have the versatility you need.

Our RDK comes with the SensorRAE 4R+ that keeps up to six sensors warmed up, stored on a bias if necessary, and ready for deployment.

## Do you have MultiRAE personal gas monitors?

AreaRAE Pro and MultiRAE use the same family of interchangeable 4R+ gas sensors.

That means just 1 sensor inventory for both transportable area monitoring and personal monitoring — with the flexibility to switch sensors in and out as your needs change.

AreaRAE Pro and MultiRAE also share the same real-time monitoring software.

So you can track the readings and location of your wireless area monitors and personal monitors — all from the same interface — for a more comprehensive view of threats.

And they have the same user interface.

So you can count on the same easy experience with your area monitors and personal monitors — plus minimized training time.



MultiRAE

*Don't know what you're walking into? Go from uncertainty to reassurance with the AreaRAE Pro, detecting more threats from a single device.*



## A PID sensor for parts-per-billion monitoring

In addition to your choice of 7 gas sensors, AreaRAE Pro includes a photoionization detector (PID) for monitoring VOCs at parts per billion. With built-in compensation for temperature and humidity, this new PID sensor responds to chemicals quickly and accurately.

## A meteorological sensor for tracking toxic plumes

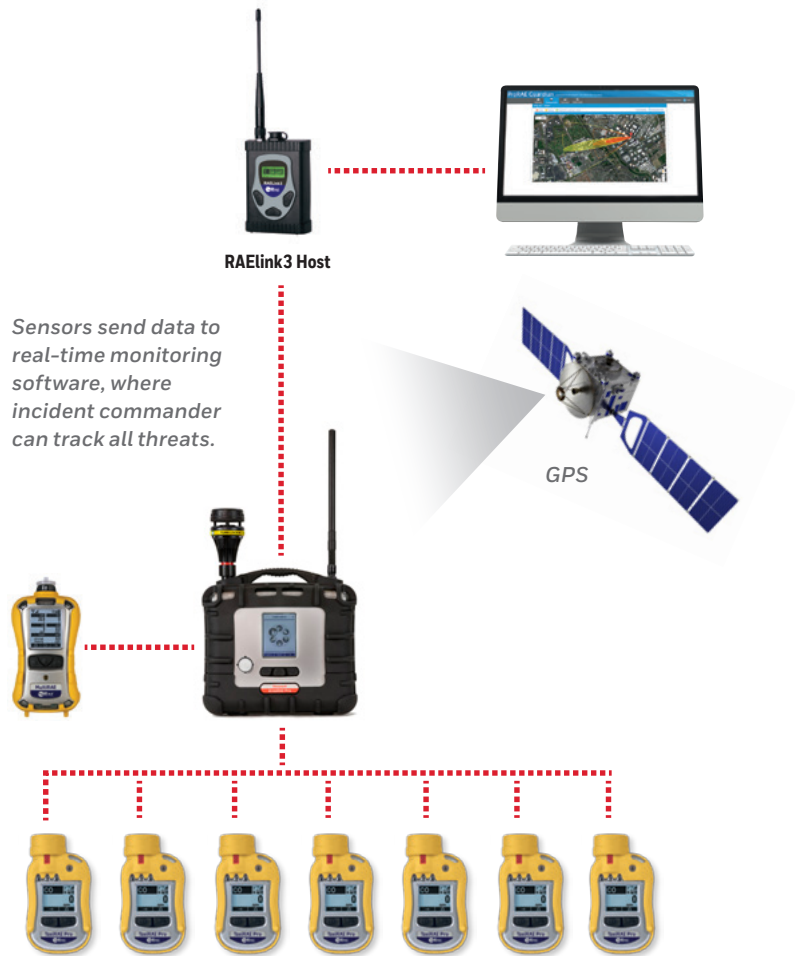
Need to predict the spread of a toxic gas? Determine the direction and dispersion so you can protect nearby populations?

No need for a cumbersome, expensive portable weather station. Instead, use the RAEMet sensor located on top of the AreaRAE Pro, to measure:

- Wind speed
- Wind direction
- Temperature
- Relative humidity



With high sensitivity and a built-in electronic compass, the RAEMet sensor measures the data you need to determine where to evacuate, what roads to close and how to prioritize actions.



## An optional gamma sensor for radiation detection

Need to monitor for dirty bombs as part of a terrorism threat? Protect your first responders from radiation exposure? AreaRAE Pro features an optional gamma sensor that delivers improved sensitivity, a quicker response time and high resistance to electromagnetic interference. And when you add the gamma sensor, you don't need to trade off on any of the other sensors in your AreaRAE Pro.

The gamma sensor has its own dedicated slot, so you can continue to monitor other threats simultaneously.



### **Modeling made easy with ALOHA®.**

*Real-time Toxic plume dispersion can be modeled using data from the RAEMet sensor. Honeywell real-time monitoring software interfaces with ALOHA®, the Hazard Modeling program jointly developed by the US EPA and the NOAA.*

*Now you can use ALOHA® to model a gas cloud, fire or explosion — and then plot a threat zone — all from the same easy interface that you use to monitor other readings from your **AreaRAE Pro**.*

# Easy to use and deploy

for fast threat assessment



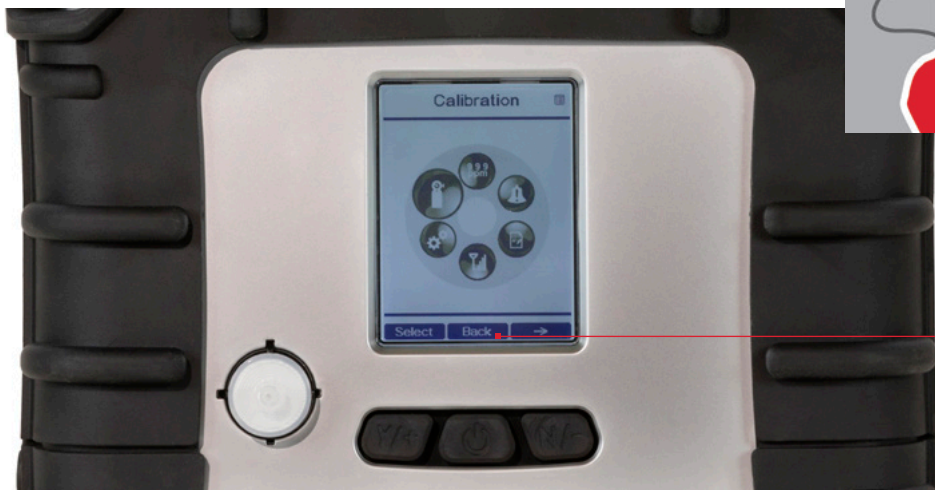
Want to quickly establish a safety zone after a chemical spill? Protect a temporary military camp from chemical warfare agents? Use our Rapid Deployment Kit to get up and running with wireless area monitoring in less than five minutes – for a mobile command center and instant situational awareness.

*Each kit includes:*

- **4 AreaRAE Pro monitors**
- **Spare rechargeable batteries**
- **Charging station**
- **Calibration kit**
- **Other necessary accessories for operation in complete autonomy**
- **Optional turnkey laptop with software for remote monitoring from up to two miles away – or via the internet from any location**

## Wireless flexibility for remote monitoring

In addition to supporting long-distance remote monitoring, AreaRAE Pro comes with a built-in mesh modem for short-range monitoring – no external router required. And if you're using other portable detectors from Honeywell RAE Systems, you can use the AreaRAE Pro as a host for transmitting the data of up to 8 devices to a remote computer. That means less equipment, more cost effective, and lighter and easier to deploy,



# AreaRAE Pro is engineered for ease and flexibility, so you can count on:



## A USER-FRIENDLY INTERFACE

Despite its sophisticated capabilities, AreaRAE Pro is easy to operate — no Ph.D. required — and is available in multiple languages. Just turn it on and go. It also has big buttons that are easy to use with hazmat gloves.



## A MONITOR THAT'S EASY TO HEAR AND SEE

AreaRAE Pro has a 108-decibel alarm for local annunciation, so when it goes off, you'll hear it — even in noisy environments. It also has wraparound LEDs for maximum visibility, even in sunlight. Plus 3 relays for connection to external strobes, horns or other triggers.



## FLEXIBLE POWER FOR SHORT- AND LONG-TERM DEPLOYMENTS

AreaRAE Pro's rechargeable lithium-ion battery delivers 20 hours of runtime, and you can use the real-time monitoring software to keep an eye on the battery life of each detector. Battery running low? Simply switch it out or, as another option, replace it with a rechargeable battery. For around-the-clock deployments, use the AreaRAE Pro with A/C power or with our SolarRAE, an all-weather, solar-powered enclosure with hazmat gloves.



## PC-BASED SOFTWARE FOR EASY CONFIGURATION

Want to change the alarm settings? To configure the monitor, simply connect it via USB cable to a laptop running our configuration software — no special cable required.

### Coming soon:

#### Configure the monitor with a smartphone.

Honeywell is adding Bluetooth Low Energy (BLE) technology to multiple products, so you'll soon be able to configure the AreaRAE Pro using a smartphone app. It's another way Honeywell is changing your experience with gas detection.



# Part of ConneXt Safety Solutions

ConneXt Safety Solutions come in several varieties, enabling you to remotely monitor safety, productivity and compliance – from a lone worker to an entire plant.



## ConneXt Loneworker

Remote workers are only a click away



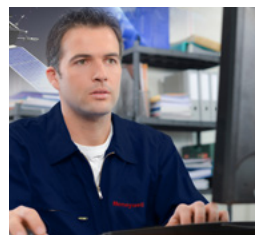
## ConneXt Pack

Turnkey kit for small teams



## ConneXt Plus

Configured system for projects up to several days



## ConneXt Pro

Enterprise solution for 24/7 monitoring



## ConneXt Safety Solutions are part of IIoT by Honeywell

Connecting your people, processes and assets to transform operations

## Honeywell Gas Detection

Honeywell is able to provide gas detection solutions to meet the requirements of all applications and industries.

Contact us in the following ways:

### Find out more:

[www.honeywellanalytics.com](http://www.honeywellanalytics.com)  
[www.raesystems.com](http://www.raesystems.com)

### Americas

Honeywell Analytics Distribution Inc.  
 405 Barclay Blvd.  
 Lincolnshire, IL 60069  
 USA  
 Tel: +1 847 955 8200  
 Toll free: +1 800 538 0363  
 Fax: +1 847 955 8210  
[detectgas@honeywell.com](mailto:detectgas@honeywell.com)

RAE Systems by Honeywell  
 Phone: 408.952.8200  
 Toll Free: 1.888.723.4800  
 Fax: 408.952.8480

### Technical Services

EMEA: [HAexpert@honeywell.com](mailto:HAexpert@honeywell.com)  
 US: [ha.us.service@honeywell.com](mailto:ha.us.service@honeywell.com)  
 AP: [ha.ap.service@honeywell.com](mailto:ha.ap.service@honeywell.com)

[www.honeywell.com](http://www.honeywell.com)

### Europe, Middle East, Africa

Life Safety Distribution GmbH  
 Javastrasse 2  
 8604 Hegnau  
 Switzerland  
 Tel: +41 (0)44 943 4300  
 Fax: +41 (0)44 943 4398  
[gasdetection@honeywell.com](mailto:gasdetection@honeywell.com)  
 Customer Service:  
 Tel: 00800 333 222 44  
 (Freephone number)  
 Tel: +41 44 943 4380  
 (Alternative number)  
 Fax: 00800 333 222 55  
 Middle East Tel: +971 4 450 5800  
 (Fixed Gas Detection)  
 Middle East Tel: +971 4 450 5852  
 (Portable Gas Detection)

### Asia Pacific

Honeywell Industrial Safety  
 7F SangAm IT Tower,  
 434, Worldcupbuk-ro, Mapo-gu,  
 Seoul 03922,  
 Korea  
 Tel: +82 (0) 2 6909 0300  
 Fax: +82 (0) 2 2025 0328  
 India Tel: +91 124 4752700  
 China Tel: +86 10 5885 8788 3000  
[analytics.ap@honeywell.com](mailto:analytics.ap@honeywell.com)

Brochure\_AreaRAE Pro\_DS01173\_07-17  
 Copyright © 2017 Honeywell International Inc.  
 All rights reserved.



**D**ETECTION | **S**AFETY | **P**ROTECTION

For Pricing or Further  
Information Please Contact Us.



**+441158390495**



**www.manonglobal.com**



**sales@manonglobal.com**

---

**Leading UK Suppliers In  
Gas Detection, Safety & Protection  
Products  
Brand New & Genuine OEM Parts  
UK & Worldwide Deliveries Available**



Worldwide Delivery



1000+ Genuine Parts & Equipment