

## PC Configuration Software Version 10.0.0.0

---

# LEGAL

---

## Revision History

Revision	Comment	Date
Issue 1	A04647	Jul 2015
Issue 2	A04938	Dec 2016
Issue 3	A05034	Oct 2017
Issue 4	A05082	Mar 2018
Issue 5	A0xxxx	Apr 2019

---

# LEGAL

---

## Disclaimer

In no event shall Honeywell be liable for any damages or injury of any nature or kind, no matter how caused, that arise from the use of the equipment referred to in this manual.

Strict compliance with the safety procedures set out and referred to in this manual, and extreme care in the use of the equipment, are essential to avoid or minimize the chance of personal injury or damage to the equipment.

The information, figures, illustrations, tables, specifications, and schematics contained in this manual are believed to be correct and accurate as at the date of publication or revision. However, no representation or warranty with respect to such correctness or accuracy is given or implied and Honeywell will not, under any circumstances, be liable to any person or corporation for any loss or damages incurred in connection with the use of this manual.

The information, figures, illustrations, tables, specifications, and schematics contained in this manual are subject to change without notice.

Unauthorized modifications to the gas detection system or its installation are not permitted, as these may give rise to unacceptable health and safety hazards.

Any software forming part of this equipment should be used only for the purposes for which Honeywell supplied it. The user shall undertake no changes, modifications, conversions, translations into another computer language, or copies (except for a necessary backup copy).

In no event shall Honeywell be liable for any equipment malfunction or damages whatsoever, including (without limitation) incidental, direct, indirect, special, and consequential damages, damages for loss of business profits, business interruption, loss of business information, or other pecuniary loss, resulting from any violation of the above prohibitions.

## Warranty

Honeywell Analytics warrants the Touchpoint Pro system against defective parts and workmanship, and will repair or (at its discretion) replace any components that are or may become defective under proper usage within 12 months from the date of commissioning by a Honeywell Analytics approved representative\* or 18 months from shipment from Honeywell Analytics, whichever is sooner.

This warranty does not cover consumable, batteries, fuses, normal wear and tear, or damage caused by accident, abuse, improper installation, unauthorized use, modification or repair, ambient environment, poisons, contaminants or abnormal operating conditions.

This warranty does not apply to sensors or components that are covered under separate warranties, or to any 3rd-party cables and components.

Any claim under the Honeywell Analytics Product Warranty must be made within the warranty period and as soon as reasonably practicable after a defect is discovered. Please contact your local Honeywell Analytics Service representative to register your claim.

This is a summary. For full warranty terms please refer to the Honeywell Analytics' General Statement of Limited Product Warranty, which is available on request.

\* A Honeywell Analytics approved representative is a qualified person trained or employed by Honeywell Analytics, or a qualified person trained in accordance with this manual.

## Copyright Notice

Microsoft, MS and MS-DOS are registered trademarks of Microsoft Corp.

Other brand and product names mentioned in this manual may be trademarks or registered trademarks of their respective companies and are the sole property of their respective holders.

Honeywell is the registered trademark of Honeywell.Inc.

TOUCHPOINT is a registered trademark of Honeywell.

Find out more at [www.honeywellanalytics.com](http://www.honeywellanalytics.com)

---

# CONTENTS

---

## Contents

<b>1.</b>	<b>About PC Configuration Software</b> .....	<b>1</b>
1.1	How to Use this Document .....	1
1.2	Intended Software Use .....	1
1.3	Intended Readers .....	1
1.4	Conventions Used.....	2
1.5	TPPR Documentation Suite .....	2
1.6	Document Translations and Optional Software .....	2
1.6.1	Available Document Languages .....	2
1.7	Associated Documents .....	2
1.8	Minimum System Requirements .....	3
1.9	Abbreviations .....	3
1.10	Further Information and Help .....	4
<b>2.</b>	<b>Safety</b> .....	<b>5</b>
2.1	Online Security.....	5
<b>3.</b>	<b>Getting Started with PC Configuration Software</b> .....	<b>6</b>
3.1	Security .....	6
3.1.1	Important .....	6
3.2	Downloading the Software .....	6
<b>4.</b>	<b>Licencing</b> .....	<b>7</b>
4.1	Obtaining a PC Configuration Licence.....	7
4.1.1	Important Notes on Obtaining a Licence.....	7
4.1.2	Before Connecting to Touchpoint Pro for the First Time.....	7
4.2	Configuring the Touchpoint Pro TCP/IP Address .....	8
4.2.1	How to Configure the TPPR's TCP/IP Address .....	8
4.3	Enabling TPPR's Remote Connection Port .....	8
4.3.1	How To Enable the Remote Connection .....	9
4.4	Generating the HID file .....	10
<b>5.</b>	<b>Software Licence Installation</b> .....	<b>12</b>
5.1	Licence Renewal Notes .....	13
5.2	Suspending or Transferring a Licence .....	13
5.3	Obtaining a Licence Replacement .....	14
5.4	PC Configuration Software Updates and Licencing .....	14
<b>6.</b>	<b>Logging in to PC Configuration Software</b> .....	<b>15</b>
6.1	Tools (Home) Screen .....	17
6.2	Inactivity Time-Out.....	18
<b>7.</b>	<b>System Configuration</b> .....	<b>19</b>
<b>8.</b>	<b>System Setup</b> .....	<b>20</b>
8.1	CCB Preconditions.....	20
8.2	System Setup Options .....	21

---

# CONTENTS

---

8.3	Commissioning Modules and Channels .....	22
8.3.1	Editing Modules .....	24
8.3.2	Editing Channels .....	24
8.4	Editing Module and Channel Configurations .....	24
8.4.1	Module Configuration .....	24
8.4.2	Channel Configuration.....	25
<b>9.</b>	<b>User Management .....</b>	<b>26</b>
9.1	Add User .....	26
9.2	Change My Password .....	27
9.3	Remove User .....	27
9.4	Password Rules .....	28
<b>10.</b>	<b>System Management .....</b>	<b>29</b>
<b>11.</b>	<b>Licence Management.....</b>	<b>30</b>
<b>12.</b>	<b>Diagnostics Screen.....</b>	<b>32</b>
<b>13.</b>	<b>Exiting from PC Configuration Software .....</b>	<b>33</b>
<b>14.</b>	<b>Extras .....</b>	<b>34</b>
14.1	About Touchpoint Pro Configuration Software .....	34
14.2	Help.....	34
14.3	Changing Language.....	34
<b>15.</b>	<b>Troubleshooting.....</b>	<b>35</b>

---

# INTRODUCTION

---

## 1. About PC Configuration Software

PC Configuration Software is designed to configure and manage most elements of Touchpoint Pro (TPPR), either by cable or network.

PC Configuration software offers advantages over using the Touchpoint Pro Local UI as licenced users can work more efficiently from both local and networked locations.

### WARNING

FOR SAFETY REASONS THIS EQUIPMENT MUST BE OPERATED BY QUALIFIED PERSONNEL ONLY. READ AND UNDERSTAND THE INSTRUCTION MANUAL COMPLETELY BEFORE OPERATING OR SERVICING THE EQUIPMENT.

### ATTENTION

POUR DES RAISONS DE SÉCURITÉ, CET ÉQUIPEMENT DOIT ÊTRE UTILISÉ, ENTRETENU ET RÉPARÉ UNIQUEMENT PAR UN PERSONNEL QUALIFIÉ. ÉTUDIER LE MANUEL D'INSTRUCTIONS EN ENTIER AVANT D'UTILISER, D'ENTREtenir OU DE RÉPARER L'ÉQUIPEMENT.

### 1.1 How to Use this Document

This document is not designed to be read 'end-to-end'. Rather it is intended to be used as an authoritative reference work and source of information. As such it is organised into logical sections and chapters that allow the reader to quickly access the required information.

This document is organised so that individual sections, chapters or pages can be copied or printed as a quick reference source. All new chapters start on an odd facing page to allow them to 'stand-alone' when printed, and some end pages are deliberately blank for the same reason.

It is recommended that the hyperlinked Contents list and the PDF bookmark tool are used for easy navigation.

### 1.2 Intended Software Use

PC Configuration software is intended to help with commissioning the Touchpoint Pro Gas Detection System and configuring its settings. It can also be used when modules or sensors are replaced or after the system hardware or firmware is upgraded.

In addition it can be used for remotely managing TPPR user accounts and passwords and it can also be used to remotely review the Touchpoint Pro configuration and diagnostic summaries for troubleshooting purposes.

It is *not* intended as a day-to-day operating tool as this function is carried out by the TPPR Touchscreen or the optional TPPR Webservice interface.

PC Configuration software requires an annual licence for each user (see *Ch.4 Licensing* for more information).

### 1.3 Intended Readers

This Manual should be read only by those who already have TPPR access rights, such as **Manufacturers, Field Service Engineers, Administrators** or **Site Engineers**. **Operators** may read it, but they have no executive functions other than viewing the diagnostic report.

This Manual is designed to be read in conjunction with the *TPPR Technical Handbook #2400M2501*, which contains specific warnings, cautions and configuration procedures that are not reproduced here.

---

# INTRODUCTION

---

## 1.4 Conventions Used

The following conventions are used in this manual:

- Software buttons are clicked or touched, but never pressed.
- **TPPR** refers to the Touchpoint Pro Gas Detection System.
- **Webserver** refers to the TPPR's optional inbuilt remote access interface, which is separate and different from the PC Configuration Software interface.

## 1.5 TPPR Documentation Suite

The TPPR documentation suite is supplied on CD-ROM with new systems, and is available to download from the Honeywell Analytics website (see back page).

The downloadable TPPR documentation suite consists of:

- Touchpoint Pro Technical Handbook
- Touchpoint Pro Operating Manual
- PC Configuration Operating Manual (this document)
- Webserver Operating Manual
- Touchpoint Pro Safety Manual

**Note:** Honeywell Analytics recommends that you regularly visit the Honeywell website (see *Ch1.4* below) to check for the latest document releases and information.

## 1.6 Document Translations and Optional Software

Translated TPPR end-user documents and software are available to download from: <http://www.honeywellanalytics.com/>

Open the link, select your language, locate **Products/Touchpoint Pro** and click on **Additional Docs** and **Software** to check for the latest releases.

**Note:** Honeywell Analytics recommends that you visit the website above, go to **Products/Touchpoint Pro/Software**, and register for email notification of updates, newsletters and technical bulletins.

### 1.6.1 Available Document Languages

- Deutsch (DE)
- English (EN)
- Español (ES)
- Français (FR)
- Italiano (IT)
- Nederlands (NL)
- русский (RU)

## 1.7 Associated Documents

TPPR documents should be read in conjunction with the relevant 3rd-Party or ancillary component and sensor documentation.

---

# INTRODUCTION

---

## 1.8 Minimum System Requirements

Minimum system requirements are:

- Touchpoint Pro Controller, Networked, unique static IP address
- Windows 7 PC with a cabled or wireless Network connection or:
- Windows 7 PC with a direct Ethernet cable connection between PC and TPPR Controller or:
- Windows 10 PC with a direct Ethernet cable connection between PC and TPPR Controller

**Note:** The Touchpoint Pro must be connected to a network in order to change any of its TCP/IP settings. You must also be permitted to cross the Network Firewall and must have Administrator privileges on your computer. Please consult your IT service if you need any help.

### IMPORTANT

Windows XP is considered a high security risk and should not be used.  
Honeywell shall not be held liable for any loss or damage caused by any cybersecurity breach, no matter how caused.

## 1.9 Abbreviations

The following abbreviations are used in this and other Touchpoint Guides.

Abbreviation	Meaning
Ack	Acknowledge
AIM	Analogue Input Module
AL	Alarm: AL1, AL2, AL3
CCB	Control Centre Board
DIM	Digital Input Module
HID or Host ID	A file that is generated to uniquely identify the host PC. It has the file extension: .hid
HMI	Human / Machine Interface
I/O or IO	Input/Output
LUI	Local User Interface or Touchscreen
M	Module
mA	milliamp – applies to module and sensor I/Os
mV	millivolt – applies to module and sensor I/Os
OS	Operating System – e.g. MS Windows™
PSU	Power Supply Unit Module
RCM	Ring Coupling Module
ROM	Relay Output Module
TCP/IP	Transmission Control Protocol / Internet Protocol
TPPR	Touchpoint Pro ®
VPN	Virtual Private Network

---

# INTRODUCTION

---

## 1.10 Further Information and Help

Contact Honeywell Analytics Technical Support for advice if you notice any conflicts between this and other documents.

Contact Honeywell Analytics Sales Support for a list of TPPR-compatible sensors, filters, test gases or other components.

Contact details are on the back page of this document.

---

# SAFETY

---

## 2. Safety

Incorrect set-up, maintenance, operation or modification of the Touchpoint Pro gas detection system *or its installation* may constitute a serious hazard to the health and safety of personnel and their environment, and may potentially lead to a disastrous situation. It is therefore imperative that the contents of the *Touchpoint Pro Operating Manual* are thoroughly understood by everyone who has access (local or remote) to the TPPR gas detection system or its associated equipment.

TPPR configuration settings are extremely complex and accessing and changing them through PC Configuration software can render the TPPR Gas Detection System dangerous, unreliable or inoperative if performed by untrained or unauthorised people.

### DANGER

Always read the *Touchpoint Pro Operating Manual* in conjunction with this manual as it contains important safety notices and operational procedures.

### DANGER

TPPR configuration settings are extremely complex and incorrect settings can render the TPPR Gas Detection System unreliable or inoperative, possibly leaving it in a dangerous state that could lead to multiple deaths and/or serious injury.

Do not allow unauthorised or untrained people to access or use PC Configuration Software.

### WARNING

Accessing TPPR over the Internet can expose you to security risks. It is strongly recommended that you use server-based firewall protocols and a VPN for additional security.

## 2.1 Online Security

Personal Computers and Networks are considered to always be at high risk of being deliberately compromised by third-parties, and by being inadvertently compromised by poor IT discipline, poor maintenance or simply through lack of user knowledge.

Touchpoint Pro is protected by security protocols, but it cannot protect itself against deliberate intrusion or damage from *compromised PCs*. This is especially so when a compromised PC is connected directly to TPPR without going through protected network servers, or when a disaffected employee is allowed privileged access.

PC users should always take the following basic safety precautions with their PCs, regardless of whether or not they use PC Configuration software or Webserver:

1. **Follow your organisation's IT protocols at all times.**
2. Always ensure that you have up-to-date OS patches and software installed.
3. Always ensure that you have the latest anti-virus database installed.
4. Only install approved software acquired from a reputable site or organisation.
5. Ensure that you restrict your online time to the minimum necessary.
6. Do not leave an unsecured or unlocked PC unattended.
7. Ensure that passwords and login names are kept hidden and secure.
8. Do not store unencrypted passwords on your PC.
9. Always take a TPPR backup whenever its configuration changes.
10. Log off from TPPR and websites as soon as you are finished.
11. Do not visit other online or social networking sites while connected to TPPR.
12. Do not discuss your TPPR system over the internet.

# GETTING STARTED

## 3. Getting Started with PC Configuration Software

This optional software is designed for use with Microsoft Windows 7 and Windows 10 and does not use Java or Cookies. It is designed solely for use within a secure network environment protected by a server firewall, and it is not intended for use over any non-secure network.

Contact your sales representative if you want to order a licence for the PC Configuration Software. When your order has been processed you will receive a voucher number that can be used to register with the licence server. The licence server will then email you a licence file with instructions on how to install it in the software. See *Ch.3.2 Downloading the Software* and *Ch.4 Licencing* for full instructions.

**Note:** Your Voucher ID will be sent by post for security reasons.

### 3.1 Security

TPPR has Network functionality that can only be accessed using the appropriate Honeywell tools and registered certificates. However, it is the user's responsibility to ensure that their own Network and Site security protocols are able to prevent unauthorised access.

Ensure that you only download Honeywell software from the official Honeywell site (see *Ch.3.2 Downloading the software*).

Ensure that you remove or replace the manufacturer's default IP Address and default passwords as soon as TPPR is connected to the network. Failure to do so may leave TPPR vulnerable to penetration.

#### 3.1.1 Important

Various files generated during the licensing installation process are unique to the computer and cannot be transferred or reinstalled. You should contact your sales representative or Honeywell Support if the licence installation fails or if you experience any difficulties.

### 3.2 Downloading the Software

After ordering your licences (see above), you can download and install the software on the target PCs:

1. Go to [www.honeywellanalytics.com/](http://www.honeywellanalytics.com/), choose your language, then go to **Products>Touchpoint Pro** and select the **Software** button. Fill out the form and select **Download**.

The screenshot shows a navigation menu with 'Overview', 'FAQ's', 'Similar Products', 'Software' (highlighted), and 'Additional Docs'. Below the menu, there are two main content areas. The left area is titled 'Software Downloads' and contains information about the 'Touchpoint Pro Webservice Certification Tool' (noting it is unavailable) and the 'Touchpoint Pro PC Configuration Software V7.0.0.0'. It describes the software's purpose for remote configuration and provides a link to the 'PC Configuration User Guide'. The right area is titled 'Download Now' and contains a registration form with fields for 'First Name', 'Last Name', 'Company', and 'Email Address'. There are two checkboxes: 'Check here to receive alerts when new versions become available' and 'Subscribe to news and alerts from Honeywell Analytics'. A red 'Download' button is at the bottom of the form. A footer note states 'Don't worry, we won't share your email address: (privacy policy)' and an 'SSL Secure' indicator is present.

2. Download and Install the software followed by any patches.

**Note:** The TPPR controller must have a unique static TCP/IP address configured, and must be connected to a suitable network.

**Note:** To install the software you must have Administrator rights on the host PC.

### CAUTION

PC Configuration Software requires the same TCP/IP address, access names and passwords as the TPPR controller, so ensure that settings are customised in the controller *before* accessing it remotely.

---

# LICENCING

---

## 4. Licencing

There is no recommended maximum number of licenced PCs, but only one instance can be logged in (including the Touchscreen) at any time.

You will be notified if someone else is already logged in so you should try again later. You should not log them out without their permission as you won't know what vital actions they are performing.

Keep all communications in a safe place as you may need them again if you want to suspend or transfer a valid licence. See also *Ch.5 Software Licence Installation*.

### 4.1 Obtaining a PC Configuration Licence

Licence keys cannot be generated in advance as they are time sensitive and PC Configuration software is optional.

If you want to buy a PC Configuration licence, contact your sales agent and give them the following information on request:

1. The product name
2. The full name of the Licence holder
3. The Company name
4. The billable email address. Do not give your personal email as this could cause delays in generating licence renewals.
5. The city and country where the system is installed

Honeywell Analytics will send back a VoucherID number by post with instructions so that you can submit the \*.hid file (see *Ch.4.3* below) for automatic processing.

#### 4.1.1 Important Notes on Obtaining a Licence

When you receive your VoucherID, follow the instructions and send an email to [License.Server@Honeywell.com](mailto:License.Server@Honeywell.com) with the following data. You will need a separate email and unique \*.hid file for each host PC:

- Mail Subject: **VOUCHID:** your new voucher number (without spaces)  
(e.g. `VOUCHID:f5f937ad-7276-4947-9727-672a378d0069`)
- Attachment: **HostIDFile** (.hld) from the host PC

The licence server will send a licence file with further instructions. You should allow several hours for the reply, although it is usually quicker.

When you receive your reply, follow the included instructions carefully and save the attached text (.txt) file, to a memorable folder on your PC, with the suffix '.cert'. E.g. save it in: `C:/Program Files/Touchpoint Pro/Touchpoint Pro Configuration Software/License/Filename.cert`.

**Note:** For security and firewall reasons, the licensing files are sent as plain text files, and must be renamed. E.g. rename `certificate_name.txt` to `certificate_name.cert` so that it will be recognised when imported by Touchpoint Pro.

In addition you will be asked to put inverted double commas around the file name before saving. This is a Softkey requirement that prevents any additional or unwanted extensions being to the file name. (Softkey is a universal proprietary licencing tool.)

Your file name should be similar to:

```
"f5f937ad-7276-4947-9727-672a378d0069.cert"
```

**Note: It is very important that you do not change the filename when you change the file type!**

Please contact your Sales Representative or Service Contact if you need further advice or help.

#### 4.1.2 Before Connecting to Touchpoint Pro for the First Time

Ensure that your TPPR has a unique static IP Address as TCP/IP changes made after licencing can affect access. Also Enable TPPR's Remote Connection Port. See *Ch.4.2* and *Ch.4.3* below for further details.

---

# LICENCING

---

## 4.2 Configuring the Touchpoint Pro TCP/IP Address

Each Touchpoint Pro Controller must be allocated its own unique static TCP/IP on your network and, for security reasons, this should never be the manufacturer's default IP address.

### IMPORTANT

Touchpoint Pro requires a physical network connection prior to the user being able to edit or save the TCP/IP configuration. If the controller is configured with a duplicate IP address (i.e. of other users already logged onto the network), you will not be able to save its TCP/IP settings until the duplicate address is resolved.

### 4.2.1 How to Configure the TPPR's TCP/IP Address

If the TPPR TCP/IP address is not already configured, or still has the manufacturer's default address:

1. Obtain a static IP address (typically from your site IT department). You will also need the default gateway address and subnet mask.
2. Using the TPPR Touchscreen, log in as an **Administrator** and then select:  
`Tool Box>Password>Global Settings>TCP/IP Settings`.
3. Select **Edit** and enter the TPPR's new IP address.
4. Check and edit the subnet mask to the one used on your local area network.
5. Check and edit the IP address of the network gateway if required.
6. Save the settings.

The TPPR checks that it has a working network connection, and checks that the programmed IP address is unique before it saves the new address settings.

### CAUTION

A potential conflict could occur if another network device has the same IP address but is not currently logged in. This can happen when rarely used items are switched on or connected to the network.

## 4.3 Enabling TPPR's Remote Connection Port

As a security measure, TPPR will only allow a maximum of 2 hours PC Configuration software connection at a time. Logged in users will get a warning message 10 minutes before the connection is terminated, which will give them the option of saving, confirming or discarding their edits before the connection is terminated.

Users who log in after the final 10 minutes will be told how long they have left before the connection is automatically broken.

The Remote port is automatically disabled when the remote user logs off, or when someone either touches the Touchscreen 'Remote Disable' icon or attempts to locally configure the Controller.

See *Ch.4.3.1 How to Enable the Remote Connection* for further details.

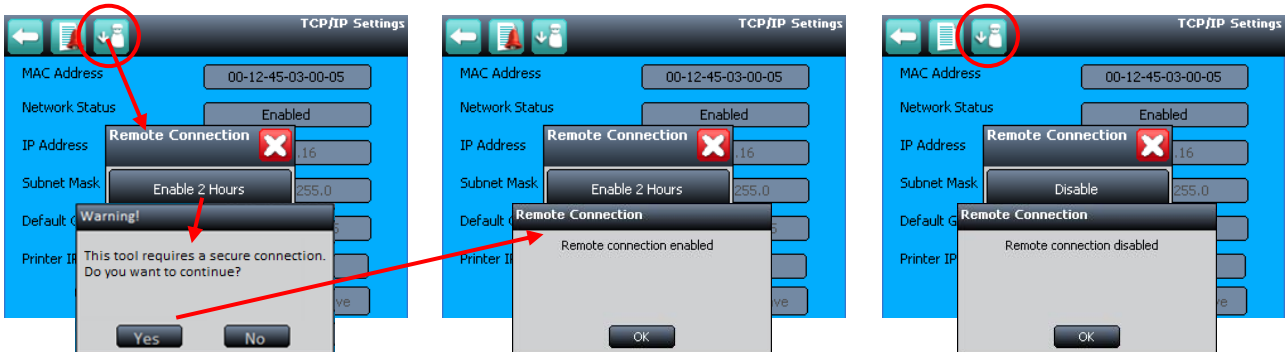
---

# LICENCING

---

## 4.3.1 How To Enable the Remote Connection

Prior to using PC Configuration software you must go to the Touchscreen and log in as Administrator or Engineer. You should then go to TCP/IP Settings and toggle the 'Remote Disable/Enable' icon and set it to **Enable 2 Hours**, click **OK** and then log out of the Touchscreen and log in to PC Configuration.



**Note:** Enabling the connection will give you a full 2 hour window in which to make your connection from PC Configuration and do work. If you delay logging in a pop-up will tell you when you only have between 10 minutes and 1 minute left. If you log in and log off (PC Configuration) your connection will be automatically broken and you will have to repeat the Enable operation.

**Note:** Unsaved and unconfirmed PC Configuration edits will be lost if the connection is broken, so you should always ensure that configuration changes are made, saved and confirmed incrementally.

**Note:** You will have to go back to the Touchscreen and re-enable the connection if you are disconnected automatically, or if a local Admin or Engineering user touches the 'Remote Disable' icon or changes language or IP settings.

**Note:** PC Configuration and Webserver Certification Tool software share the same TPRR Port, but only one connection can be active at a time.

**Note:** The Enable / Disable option does not affect Network Status; it only affects the remote connection port.

**Note:** All Enable / Disable events are recorded in the TPRR Events Log.

---

# LICENCING

---

## 4.4 Generating the HID file

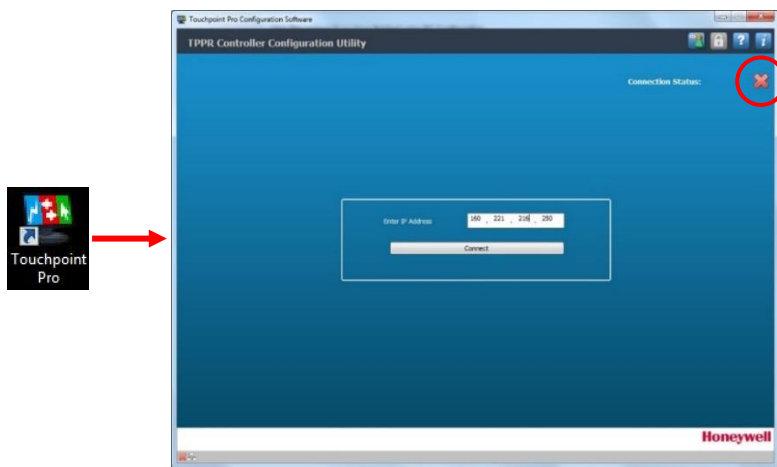
To get a licence you will first need to generate a Host ID (.hid) file that can be sent to the licence server with the VoucherID. The HID file uniquely identifies the PC upon which the software will be run.


To generate a .hid file:

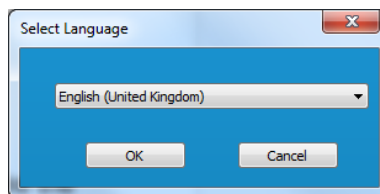
1. Download and install the PC Configuration software on the computer on which it will be used.
2. Ensure that your PC is connected to the same network as TPPR (or use a direct Ethernet cable connection).
3. Ensure that Touchpoint Pro is running and connected to the network with the PC Configuration Switch Enabled, and then obtain its static IP address (Touchscreen>Extras>Password>Global Settings>TCP/IP Settings).

**Note:** Contact your IT department if you need help in installing software or establishing a connection to TPPR.

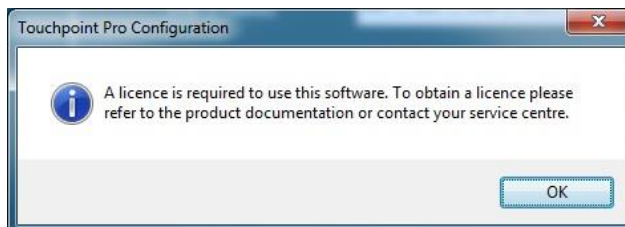
4. On your PC desktop, click the Touchpoint Pro icon to start the application:



5. Click the  icon circled above, select your chosen language from the drop-down list, and then click **OK** to make the change:



6. Enter Touchpoint Pro's IP address, and then click **[Connect]**, which brings up this dialog if your PC is not already licenced:

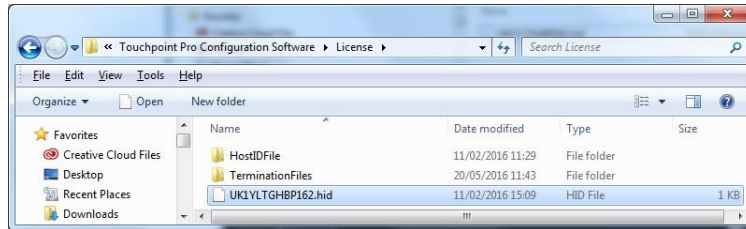


---

# LICENCING

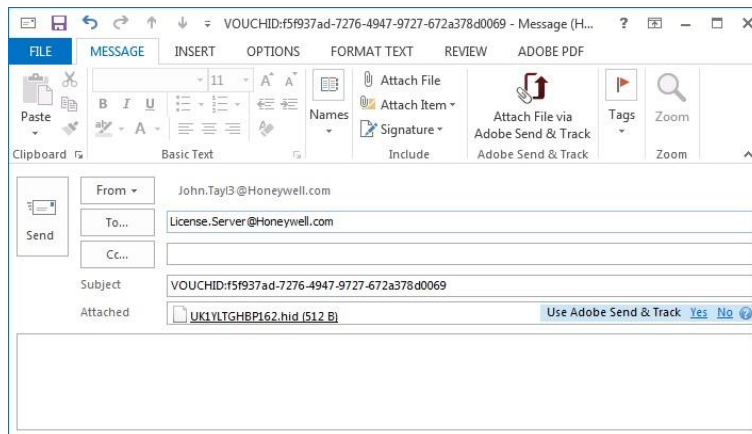
---

7. Click **OK** to generate the Host ID file (\*.hid) in Explorer. Note where it is saved as you will need to email the VoucherID, with this file attached, to the licence server.

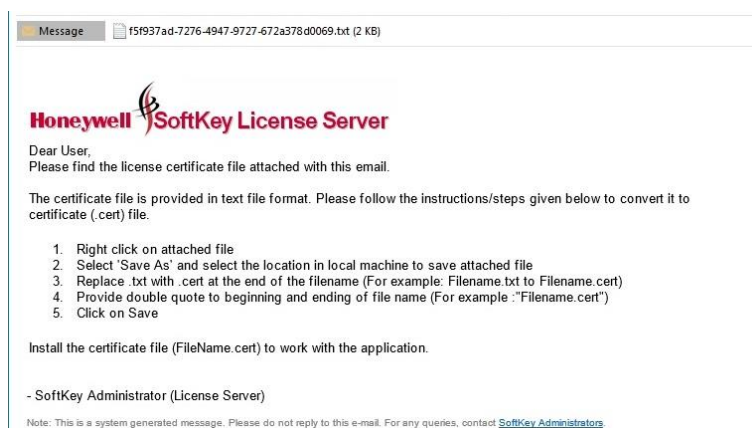


**Note:** You can choose to copy or save files to a more memorable location if you want to.

8. Follow the instructions contained in your VoucherID letter to obtain your licence key. They ask you to email your .hid file to the automatic [License.Server@Honeywell.com](mailto:License.Server@Honeywell.com) (but do not add any other text in the email body):



9. You will receive back an email with a text attachment and similar instructions:



**Note:** The double quotes / inverted commas (“...”) prevent your PC from adding a different suffix when saving the file.

10. See *Ch.5 Software Licence Installation* for further instructions.

---

# LICENCE INSTALLATION

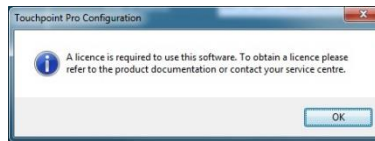
---

## 5. Software Licence Installation

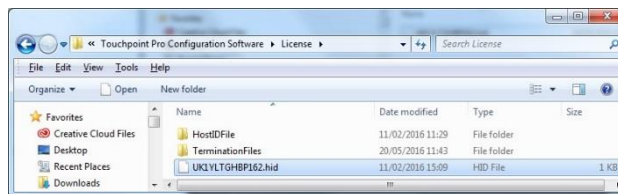
This will require the TPPER to be online and with the 'Remote Enable' icon **Enabled** (see *Ch.4.3* for further details).

To install the licence:

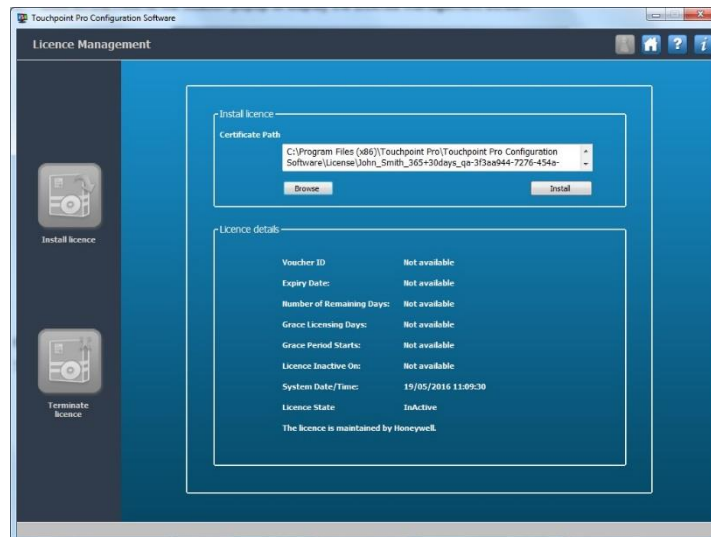
1. After receiving, converting and saving the licence file, start the Touchpoint Pro Configuration Software.
2. When the software has launched, enter the Touchpoint Pro's IP Address.
3. Click the **Connect** button to connect the TPPER PC Configuration application to the Touchpoint Pro Controller.
4. If the application is not licensed it will show an error message:



5. Click **OK** and the error message will be replaced by an explorer page showing the Host ID (.hid) file, which you last used to get the licence:



6. Close the explorer and return to the Licence Management Screen:



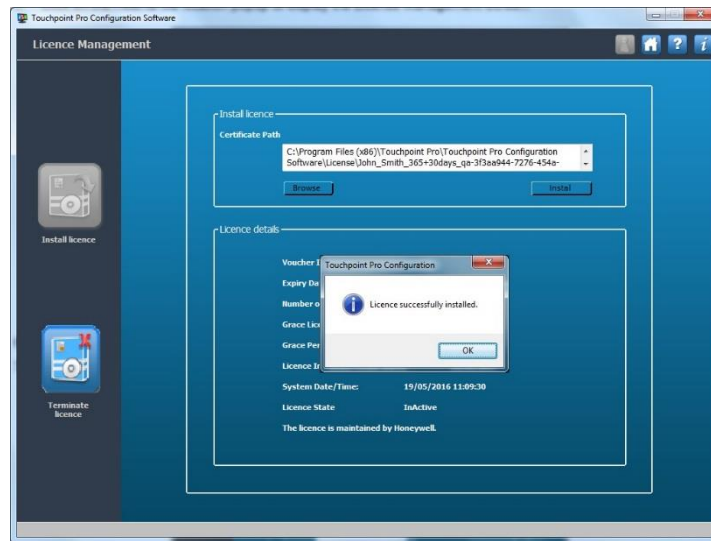
7. Click on **Browse**, find your saved '\*.cert' file and then click on **Install**.

---

# LICENCE INSTALLATION

---

8. Successful installation will be confirmed:



9. Click **OK**.

## 5.1 Licence Renewal Notes

The user has to do nothing further once the software is licensed as the validity is checked every time the software starts.

The Licence Server will auto-update your current licence if you buy a new licence before the current one expires, or if you chose the auto-renew option when you purchased the current licence.

PC Configuration users will be notified when the registered licence has less than 30 days left to run, which gives them the opportunity to renew it before it expires. However, a short grace period may be applied if the licence is not renewed in time. (This grace period is not guaranteed and may be varied or withdrawn without notice.)

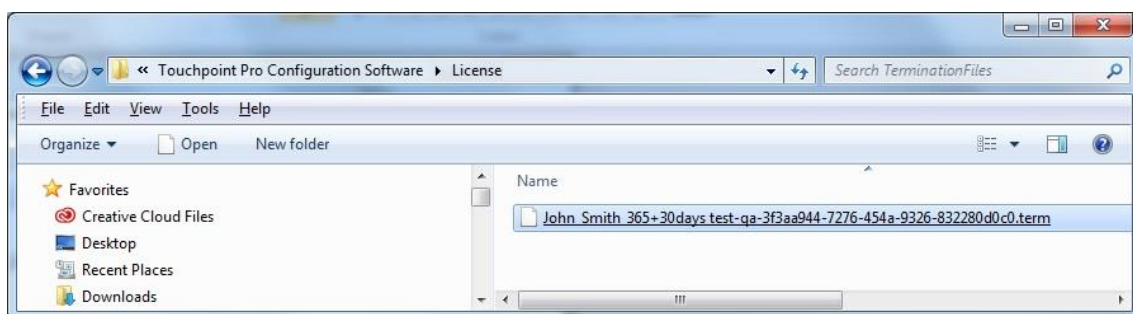
You can transfer the licence to another PC by first terminating it in the current PC and then installing it in the new PC. It will be necessary to generate a new host identification file (.hid) for the new PC, as described above, and then email the termination and host identification files to the licence server. See *Ch.5.2 Suspending or Transferring a Licence* for more details.

You will need to obtain and install a new licence if your present licence is allowed to expire. See *Ch.4.1 Obtaining a PC Configuration Licence* for more details.

## 5.2 Suspending or Transferring a Licence

Sometimes it may be necessary to suspend or transfer a licence, e.g. if you are upgrading the PC or someone else takes over from you. Failing to suspend (terminate) a licence correctly will lead to its loss and will require the purchase of a new VoucherID.

To transfer or suspend a licence, you must click the PC Configuration software **Terminate Licence** button to terminate your current licence. This generates a termination (\*.term) file, which is stored in your Windows Explorer:



To get a replacement licence you will need to email the original VoucherID, with the \*.term and \*.hid file attached, to the licence server (see *Ch.5.3 Obtaining a Licence Replacement* for more information).

---

# LICENCE INSTALLATION

---

**Note:** The default location for the two files is `C/Program Files (x86)/Touchpoint Pro/Touchpoint Pro Configuration Software/License/`, although you can copy or save the .hid and .term files to a more memorable or shared location if you want to.

**Note:** You will have to purchase a new 12-month licence if you do not first generate the Termination file.

## 5.3 Obtaining a Licence Replacement

The procedure for obtaining a replacement licence is exactly the same as sending your email to the Licence Server for the original licence (see *Ch.4.1 Obtaining a PC Configuration Licence*).

If you are replacing a suspended, still valid licence you can use your original saved VoucherID, but you must include both the HID file and the new Termination File (.term) that you created above.

Receipt of the files at Honeywell licence server will automatically generate a new licence file, which is valid for the remaining licence period.

## 5.4 PC Configuration Software Updates and Licencing

New PC Configuration software automatically installs over previous versions but, if you do experience installation problems, you should terminate the current licence and then uninstall Touchpoint Pro Configuration software from the host PC before reinstalling the newer version. See the instructions in *Ch.5.2 Suspending or Transferring a Licence* before uninstalling PC Configuration software.

### CAUTION

Before uninstalling PC Configuration software, ensure that you have terminated and backed up the current licence. Contact your sales representative if you need help or advice.

---


# LOGGING IN

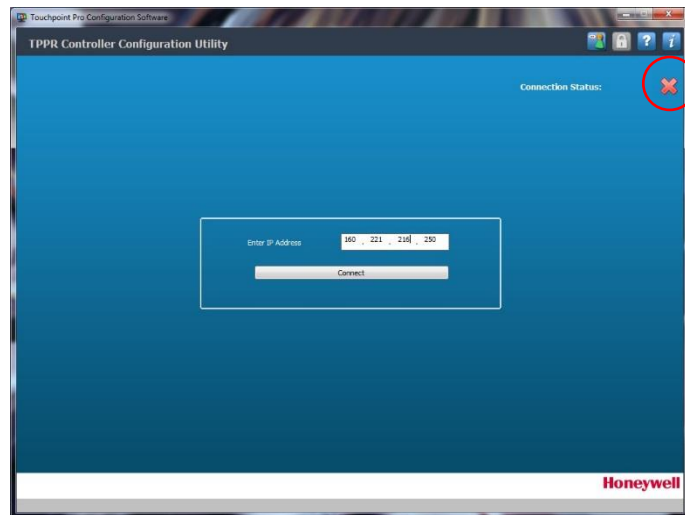
---

## 6. Logging in to PC Configuration Software

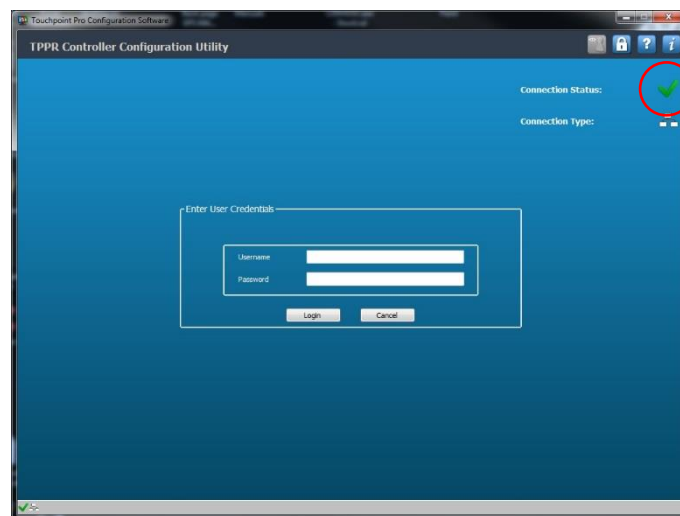
### WARNING

Before making a PC Configuration connection, review all active events on the controller. Initiating an edit session will inhibit the selected module and could disable active alarm or fault warnings.

1. **On the controller**, go to the Touchscreen, log in, go to TCP/IP Settings and toggle the 'Enable Remote' icon to **Enable 2 Hours**, then log out.
2. **On the PC**, click the PC Configuration icon  to start the application, then enter the IP Address and click on **Connect**:



3. Successful connection is shown when the red X (circled above) is replaced by a green ✓.



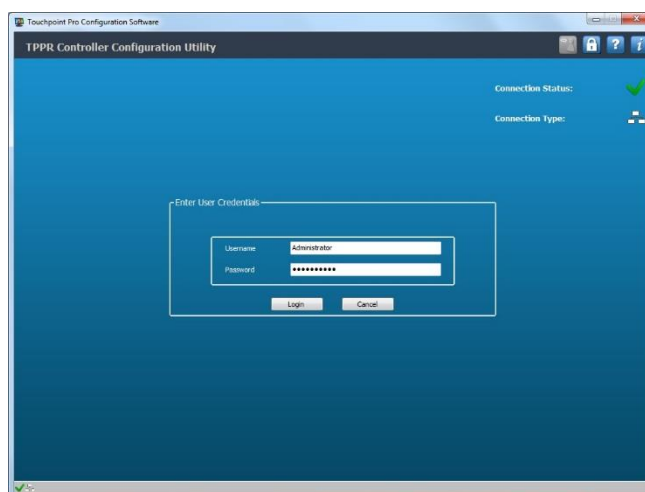
---

# LOGGING IN

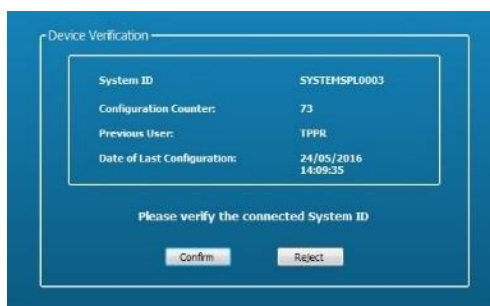
---

**Note:** A warning will be displayed if another edit session is open, either from another PC Configuration user or on the controller. If necessary, it is possible to terminate the session of another user of the same or lower level. You cannot do this to someone of higher status. See *Ch.4.3 Enabling TPPR's Remote Connection Port* for further details.

4. When connected to a free system, enter your user name and password, and then click **Login**:



5. Verify that you are connected to the correct Controller, and check that the last user and configuration details are correct:

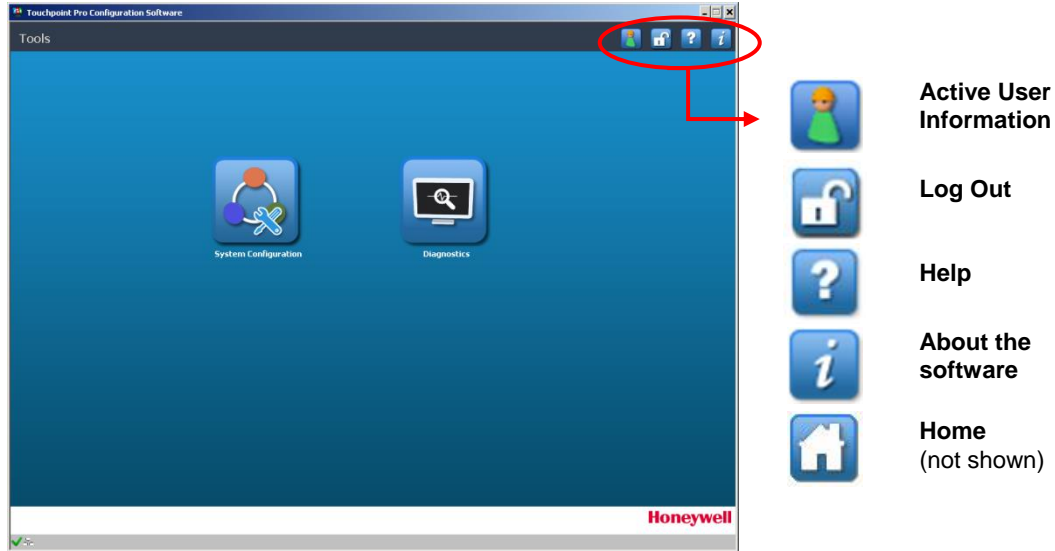


---

# LOGGING IN

---

6. If satisfied, click **Confirm** to open the following **Tools** (Home) screen. Unauthorised tools will be greyed out. E.g. Operators are not allowed to access **System Configuration** tools but can view **Diagnostics**.



The following chapters detail PC Configuration's functions in more detail.

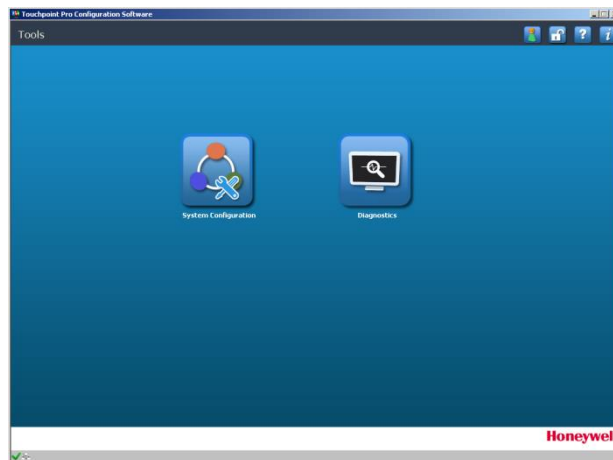
## 6.1 Tools (Home) Screen

This screen is the access point to the **System Configuration** and **Diagnostics** tools. Note the padlock icon, which you click to log in or log out.

**Note:** You will be automatically logged out after a short period of inactivity and disconnected after a further period if you don't log back in. See *Ch.6.2 Inactivity Time-Out* for further information.

You must return to this screen every time you want to log out and/or exit from PC Configuration. You should always log out as soon as you have completed and saved your tasks.

Click the open padlock to log out.



---

# LOGGING IN

---

## 6.2 Inactivity Time-Out

PC Configuration software will automatically terminate your PC Configuration session if it senses no activity for 20 minutes, and it will close your connection to the TPPR Controller if you don't log back in soon afterwards. You will then have to go to the TPPR Controller and toggle the 'Remote Enable' icon to reset the 2-hour connection window. See *Ch.4.3* for more information.

**Note:** Any unsaved activity will be lost and you will have to restart editing from the beginning.

**Note:** It is important to log out as soon as you are finished editing as you may be preventing someone else from logging in. You may also be tying up network bandwidth unnecessarily.



---

# SYSTEM CONFIGURATION

---

## 7. System Configuration

Clicking the **System Configuration** button opens four **System Setup** options, which are described in this chapter.

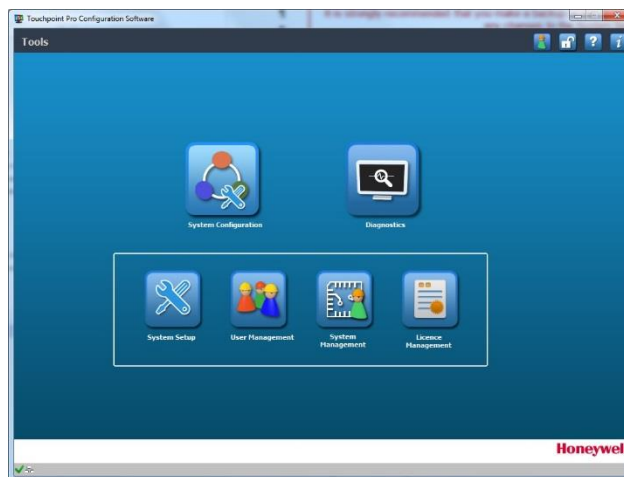
### WARNING

Do not attempt to change any settings unless you are familiar with the Touchpoint Pro Operating Instructions.

Do not leave the PC Configuration utility idle for any length of time, as a system timeout will log you out and will discard all unsaved changes.

It is strongly recommended that you make a backup of the Touchpoint Pro configuration *before* making any changes to the System Setup.

To check or edit system settings, log in as an **Administrator** and click on the **System Configuration** button to open this screen:



You now have four additional menu options:

1. System Setup (see Chapter 8)
2. User Management (see Chapter 9)
3. System Management (see Chapter 10) (Administrators only)
4. Licence Management (see Chapter 11)

Explanations of the four options appear in the following pages.

**Note:** Only Administrators can configure the CCB and install and commission modules, while Maintenance Engineers can only view and edit those modules afterwards.

---

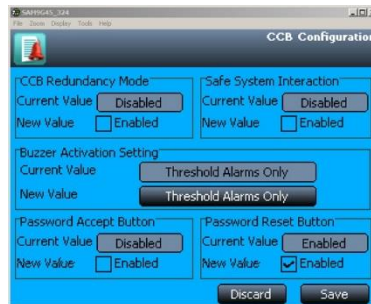
# SYSTEM CONFIGURATION

---

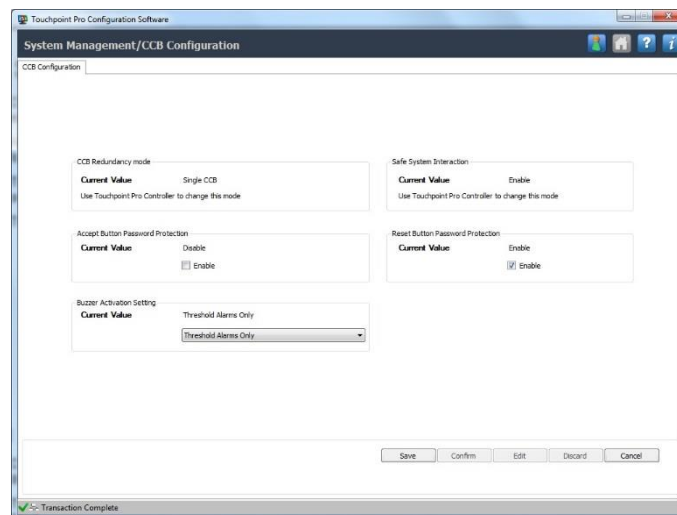
## 8. System Setup

The TPPR Touchscreen and PC Configuration software system setting up procedures are very similar, but the **CCB Redundancy Mode** and **Safe System Interaction** can only be configured through the TPPR Touchscreen.

This picture shows the TPPR Touchscreen CCB Configuration screen:



**Note:** **Password Accept** and **Password Reset** settings control whether or not a password must be input in order to accept or reset active alarms. These two values can also be changed in PC Configuration software by going to **Tools>System Configuration>System Management** to open the **System Management/CCB Configuration** page:



### 8.1 CCB Preconditions

Check that the **CCB Redundancy Mode** and **Safe System Interaction** settings are correct (see picture above) before doing any System Management, System Setup or Commissioning using PC Configuration software.

The **CCB Redundancy Mode** setting informs the TPPR system whether or not a backup (i.e. redundant) CCB assembly is fitted:

- If **Disabled**, the controller will not check for a second CCB and therefore cannot use it, even if one is fitted.
- If **Enabled** but a second CCB is not fitted, a second CCB will be shown in the System Setup tree, but TPPR will show it as being faulty and will indicate a fault situation.

The **Safe System Interaction** setting forces users to confirm all **Reset**, **Inhibit** and **Accept** operations. When **Enabled**, a confirmation popup is displayed showing the requested operation. A user may either cancel or confirm the operation to continue.


**Note:** When **Safe System Interaction** is enabled, **Reset**, **Accept** and **Inhibit** operations cannot be carried out using the Webserver or Modbus interfaces and may only be carried out from the TPPR Touchscreen.

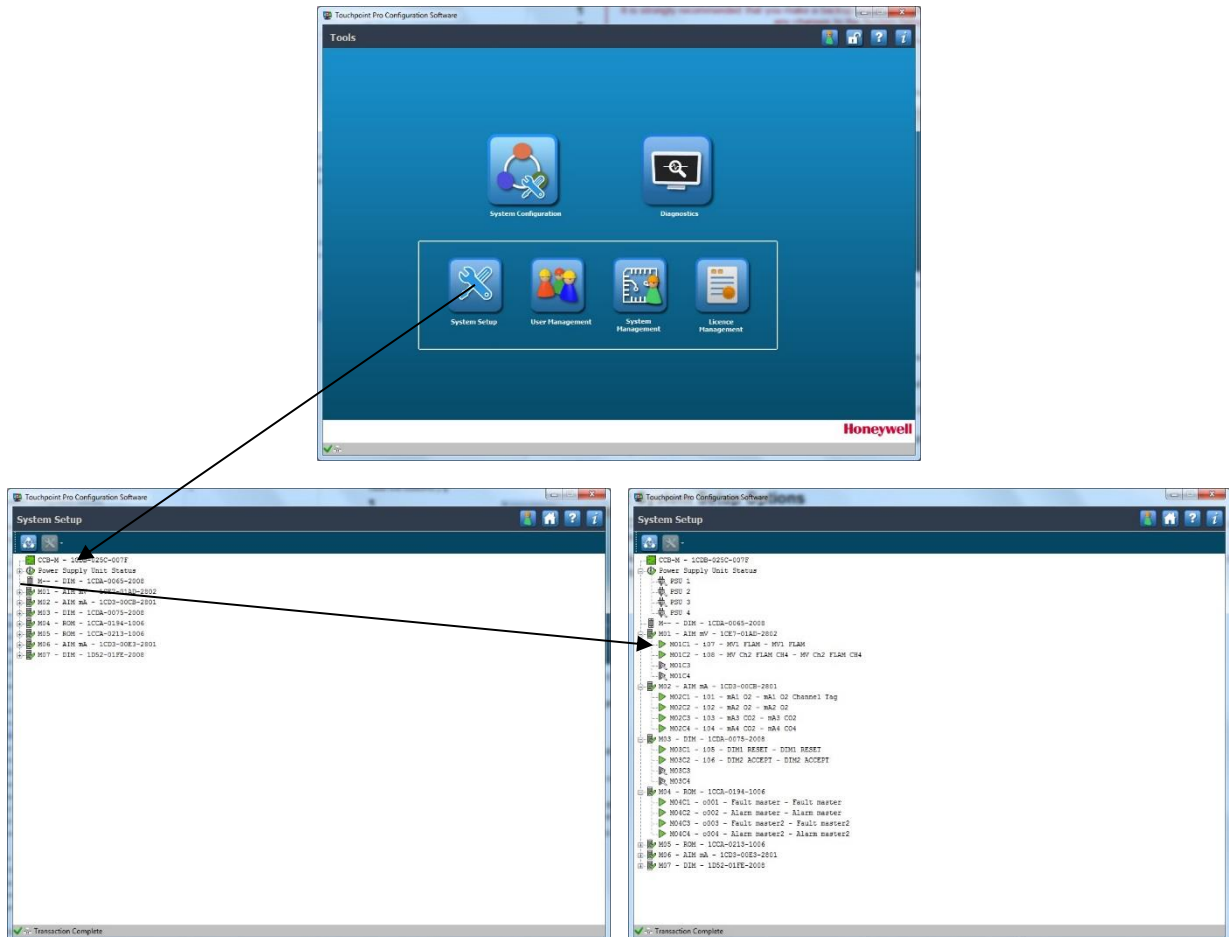
**Note:** These parameters are not stored in **System Backups** and should be rechecked and/or reset following a **System Restore**.

# SYSTEM CONFIGURATION


## 8.2 System Setup Options

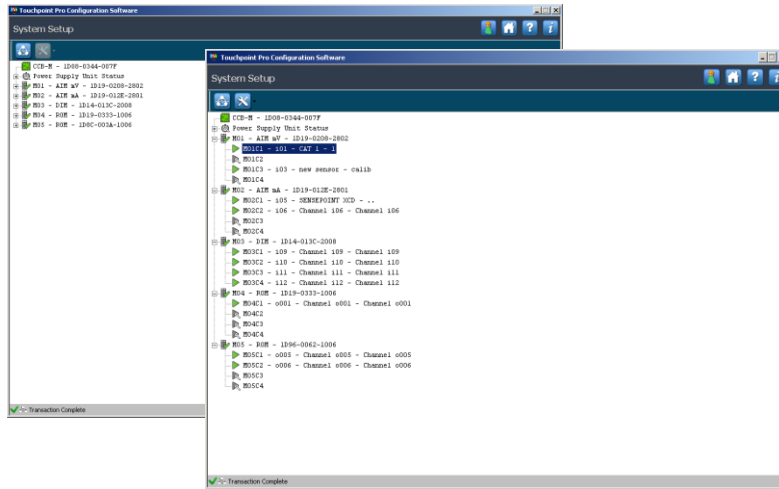
Clicking the **System Setup** button will open a menu tree listing all of the available modules and channels. Click on an item to expand it.

Administrators can click the **Ring Circuit**  button to scan the ring network and refresh the menu, but this is not available to other users.





# SYSTEM CONFIGURATION

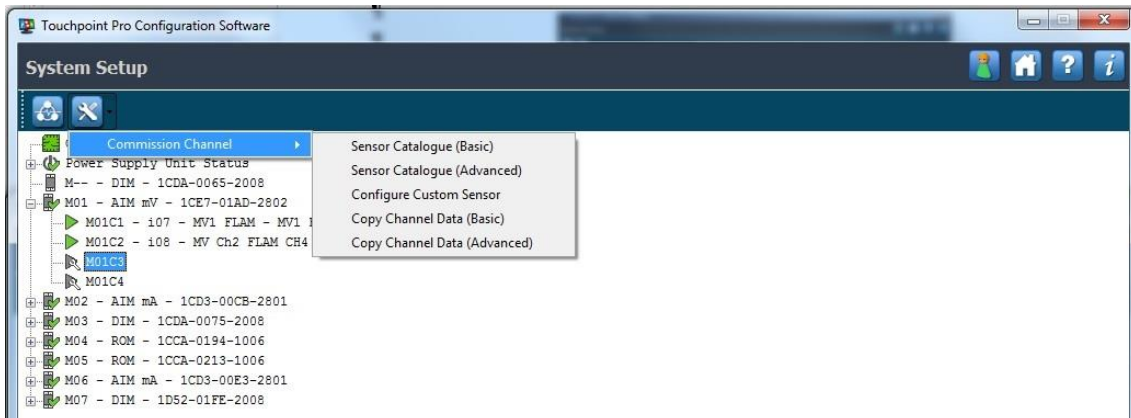
The **Settings** button  stays grey until you select a module or channel that is editable (as shown in the right screen below).



## 8.3 Commissioning Modules and Channels

Expand the menu above until you find the required module or channel: , and then highlight it. After that you can click the

 icon, and select options from the context-sensitive drop-down menu shown below:

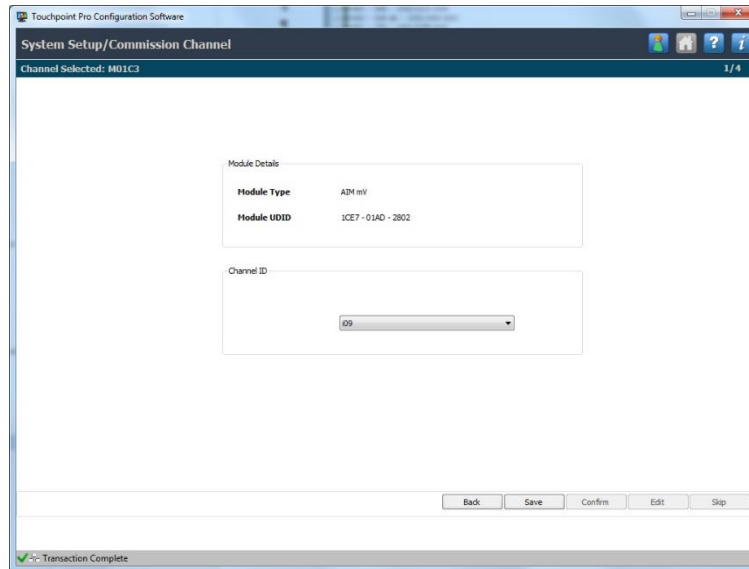


---

# SYSTEM CONFIGURATION

---

Each selection will open a series of numbered editing pages where you can select or enter further options:




- The software speed is dependent on the speed of your network and the amount of network traffic.
- Each page has a page count at the top to show you where you are in the setup or editing process.
- Drop down lists show all the available options from which to choose
- Drop down lists may change following sensor catalogue updates.
- The buttons at the bottom of the page are context sensitive, and may be greyed out.
- If you click **Save**, you have to then click **Confirm** to commit the changes and move to the next page.
- If you click on **Back** or **Discard** your unconfirmed changes will be deleted and the Channel or Module returned to its previous or uncommissioned state.
- Some editable text fields have hover-comments to explain limitations on character usage etc.
- If you make mistakes you have the options to go back, to edit, or to discard changes.
- Changes may invalidate calibration on channels that have catalytic sensors. These channels will be inhibited until they are recalibrated.

---

# SYSTEM CONFIGURATION

---

## 8.3.1 Editing Modules

From the **System Setup** screen, select the required **module**, and then click the  icon to get the following options:

- Replace Module
- Remove Module
- Set Normal State
- Edit Module Configuration
- View Module Configuration

Please refer to the Touchpoint Pro Operating Instructions for details on using each of these options.

It is recommended that you select **View Module Configuration** before making any changes.

## 8.3.2 Editing Channels

From the **System Setup** screen above, select the required **channel**, and then click the  icon to get the following options:

- Edit Channel Configuration
- Decommission Channel
- View Channel Configuration

Please refer to the Touchpoint Pro Operating Instructions for details on using each of these options.

Some of the lists may be very long, and you will have to scroll through the list to read them all.

## 8.4 Editing Module and Channel Configurations

You can use System Setup to edit Module and Channel Configurations, as shown below.

### 8.4.1 Module Configuration

You can edit the **Module Tag** text.

Selecting **Edit Module Configuration** displays an information screen with the module type, module number and UDID. These cannot be edited.

Click **Skip** to move to the next screen. You can then edit the **Module Tag** text. On completion, click the **Save** and then **Confirm** buttons.

Press **Skip** to leave the screen without making changes, You will be returned to the **System Setup** view.

---

# SYSTEM CONFIGURATION

---

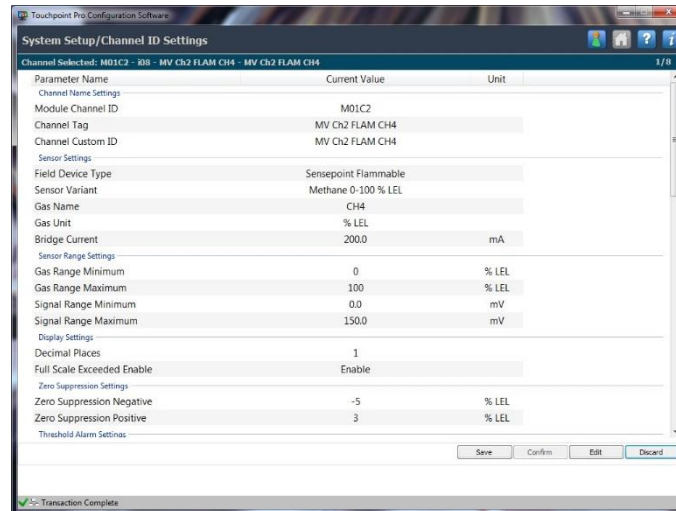
## 8.4.2 Channel Configuration

Selecting an **Edit Channel Configuration** option displays a scrollable list of the channel settings. Scroll down the page to see all settings.

Select the required setting, and click on **Edit** to make changes. This may be repeated as required.

On completion you have the option to save and then confirm your changes, or to discard them without changing the configuration.

Example of a mV Channel Settings Screen:



**Note:** Some fields may not be editable as they may have fixed values or values tied to other settings.

---

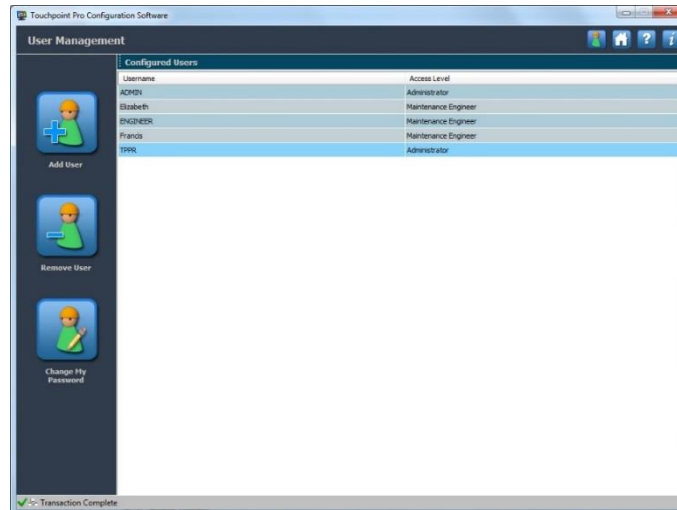
# USER MANAGEMENT

---

## 9. User Management

Clicking the **User Management** button will open the screen below.

In this screen you will see a Configured Users list that can be edited using the on-screen buttons, or re-ordered using the column headings:



**Note:** The **Change My Password** button applies to the currently logged-in Administrator or Engineer user only. To change a different user's password you have to first remove them and then add them back with a different password.

**Note:** You cannot add or remove someone who is of higher status, or someone who is currently logged in (i.e. yourself).

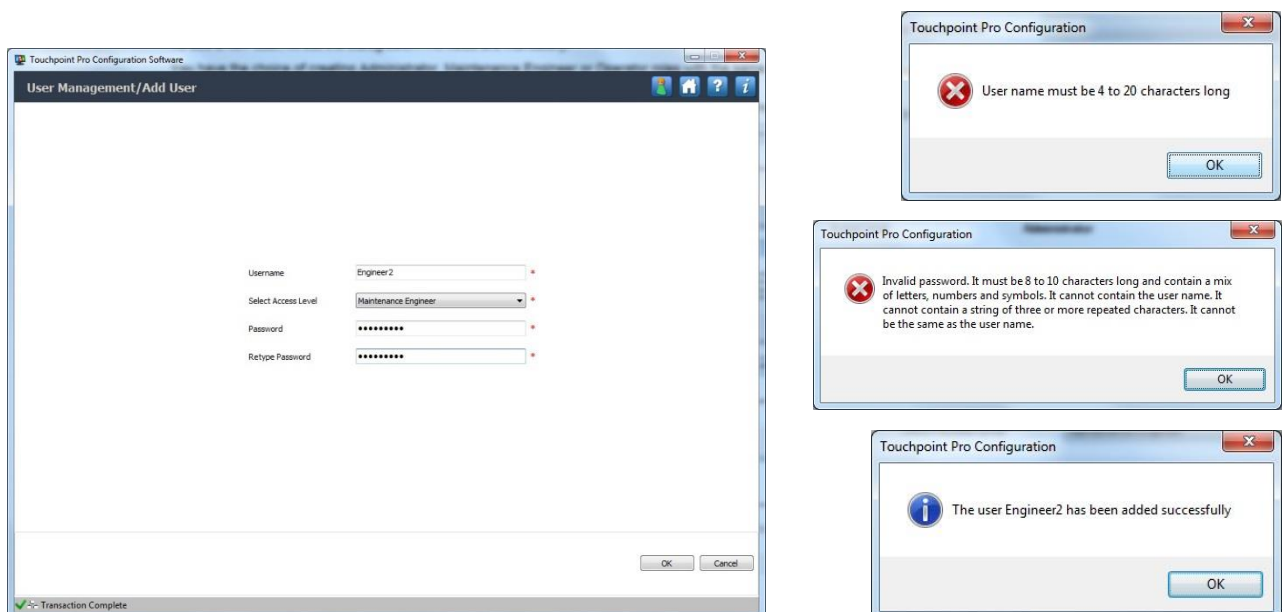
**Note:** It is advisable to have a minimum of two Administrators as lost passwords cannot be recovered and re-creating lost Administrator access would need help from a Honeywell Field Service Technician.

### 9.1 Add User

To add a new user, fill out the dialog below. All fields are mandatory.

You have the choice of creating Administrator or Maintenance Engineer roles with the same rights and responsibilities as Touchpoint Pro. Operators can only view diagnostic information in PC Configuration software.

Accidentally clicking in a password field requires you to enter a valid string before you can move to another field.



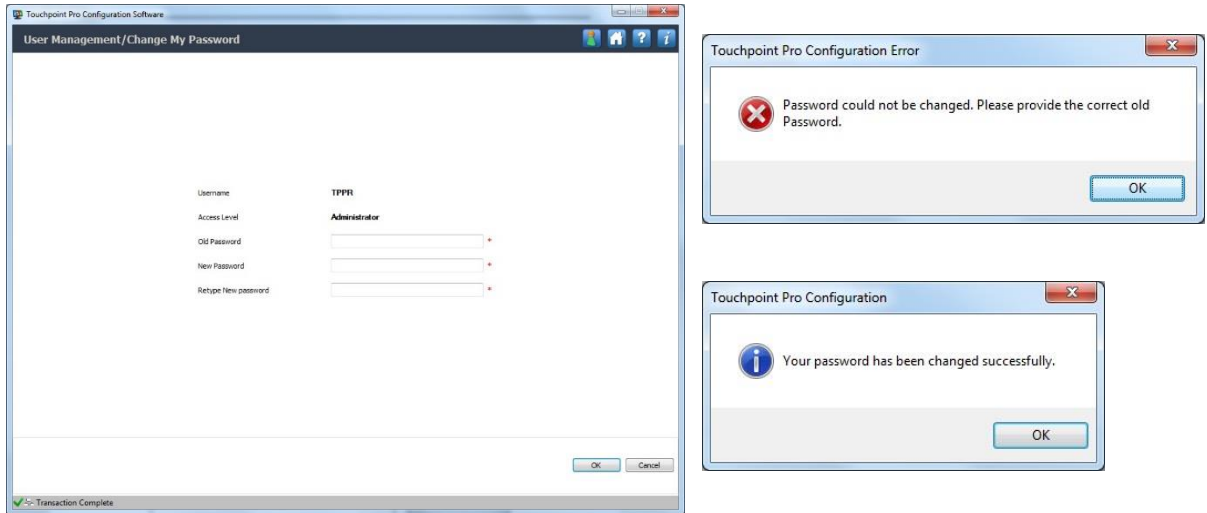
---

# USER MANAGEMENT

---

## 9.2 Change My Password

From the **User Management** Home Screen, click on the **Change My Password** button to open this dialog:

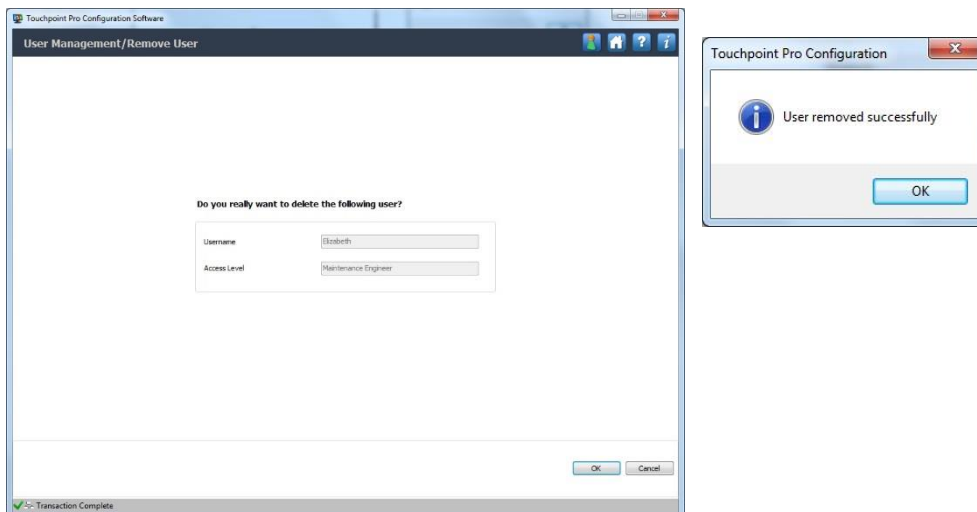


Enter the details and click OK.

This option is not available to Operators.

## 9.3 Remove User

From the **User Management** Home Screen, first click on the user to be removed, and then click the **Remove User** button to open this dialog:



Confirm the user details, and then click **OK**.

**Note:** You cannot remove someone of higher status than you are, and you can't remove the user who is currently logged in.

---

# USER MANAGEMENT

---

## 9.4 Password Rules

Commas and semicolons cannot be used and will be replaced with underscores, and you cannot have white spaces before or after the password.

It is possible (but inadvisable) to have the same password for different users or roles.

It is advisable to create a spare Administrator level account and password that can be saved in a safe location for emergency use. Remember that only an Administrator can create new Administrator accounts so, if you forget the Administrator password, you will need a registered Touchpoint Pro Administrator or a Honeywell Engineer to create a new account and delete the old one for you.

Forgotten passwords cannot be recovered, but Administrators can delete and create accounts for anyone but themselves.

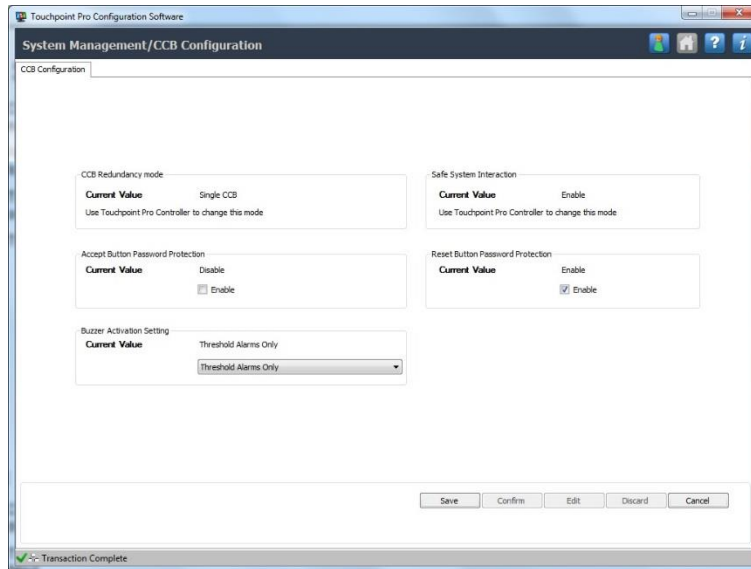
---

# SYSTEM MANAGEMENT

---

## 10. System Management

To manage Events, click **System Management** to get this screen:



From this screen you have several options:

1. Change the **Buzzer** activation to to:
  - Buzzer Off
  - Threshold Alarms Only
  - All Alarms Only
  - All Events (Alarms, Faults, Inhibits and Warnings)
2. Change the **Accept** button password protection option (**Enable / Disable**)
3. Change the **Reset** button password protection option (**Enable / Disable**)
4. Make your changes, click **Send** and then, if you are happy with the changes, click **Confirm** and you will be taken back to the **Tools** screen.

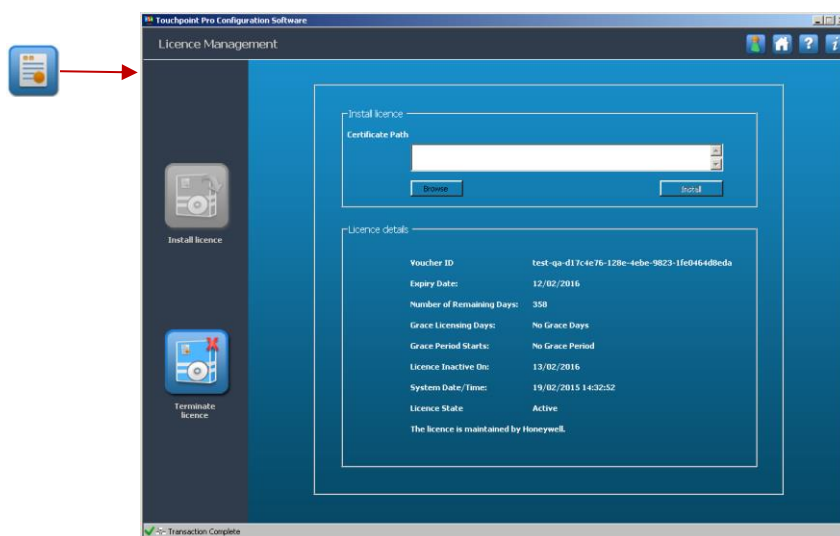
# LICENCE MANAGEMENT

## 11. Licence Management

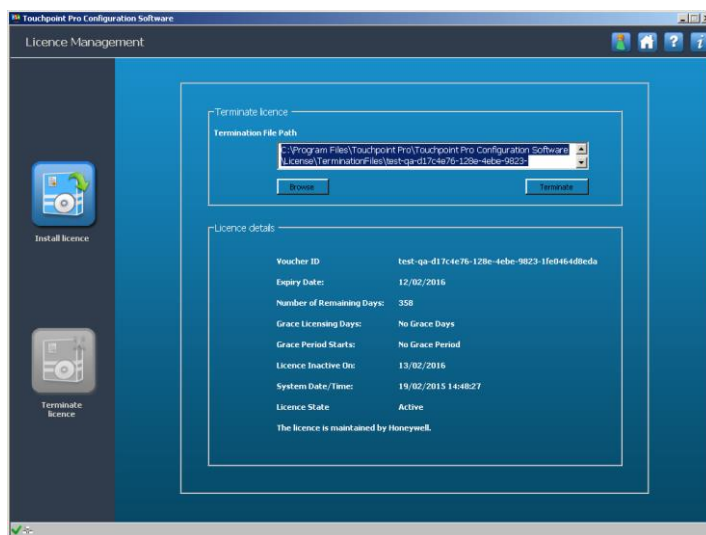
Administrators can install a new licence, or terminate a valid licence if they want to transfer it to a new PC, or if they want to make major changes to their current PC such as replacing the hard drive or renewing the OS.

**Note:** If you terminate your licence you retain the remaining life of the licence when you reinstall it. If you don't terminate the licence it may be permanently lost.

To view licence details or to make licence changes, go to the **Tools** screen and click on the **Licence Management** icon to view this screen:



Click the **Terminate Licence** button to terminate the licence on the current PC:



Note the file path highlighted above.

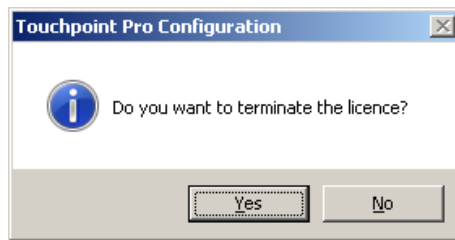
If you accidentally delete the path, click the **Home** icon and start again. Or you can use the **Browse** button to navigate to the file location.

---

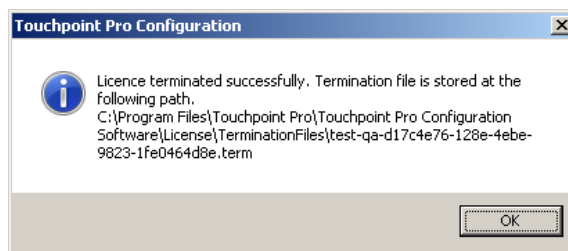
# LICENCE MANAGEMENT

---

Click the **Terminate** button and then confirm you want to terminate the licence:



Click **Yes** and then note down the location of the terminated licence:



You will need to email a copy of the .term file and the .hid file to the licence server, as shown in *Chapter 4.4*. You will then be emailed a new licence that is valid for the remaining licence period.


Contact your sales representative if you need help with changing the licence or are unable to send the termination details.

---

# DIAGNOSTICS

---

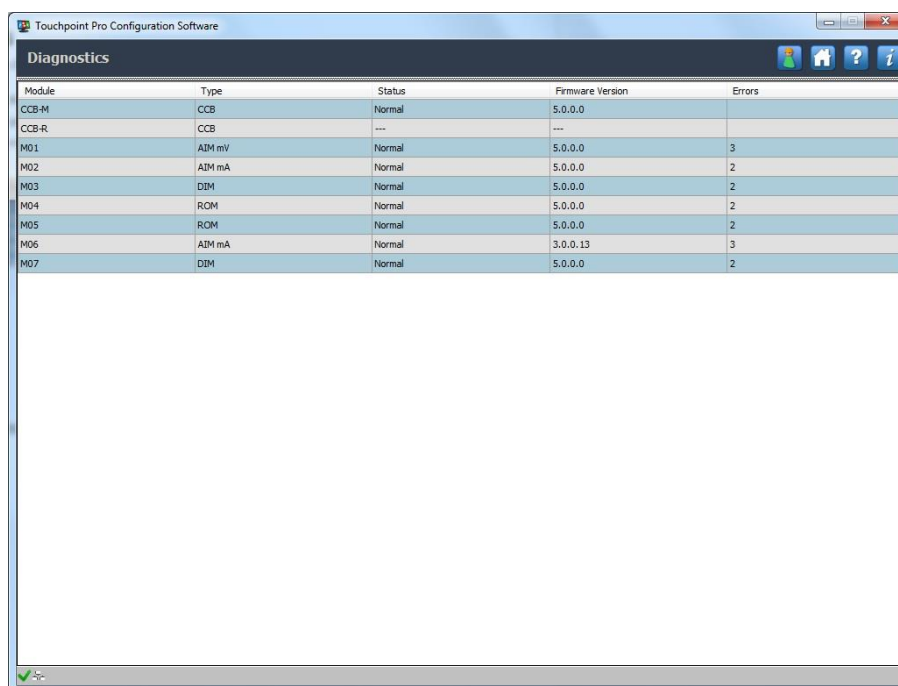
## 12. Diagnostics Screen

On the **Tools** screen, click the **Diagnostics**  icon to see status and version information about the Touchpoint Pro System, as shown below.

You may be asked to provide this information if you require a service call.

**Note:** The error count is used purely for software development purposes and conveys no useful information to the user.

**Note:** This is the only page accessible to Operator levels.



Module	Type	Status	Firmware Version	Errors
CCB-M	CCB	Normal	5.0.0.0	
CCB-R	CCB	---	---	
M01	AIM mV	Normal	5.0.0.0	3
M02	AIM mA	Normal	5.0.0.0	2
M03	DIM	Normal	5.0.0.0	2
M04	ROM	Normal	5.0.0.0	2
M05	ROM	Normal	5.0.0.0	2
M06	AIM mA	Normal	3.0.0.13	3
M07	DIM	Normal	5.0.0.0	2

---

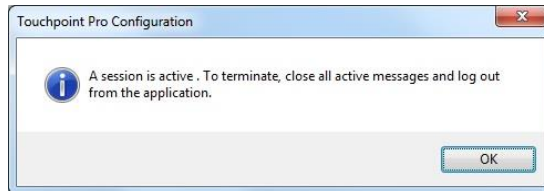
# EXITING PC CONFIG

---

## 13. Exiting from PC Configuration Software

You must return to the **Tools** (Home) screen and logout before you can close the application.

You will be warned if you try to exit any other way:



To log out, go to the **Tools** (Home) screen and click the padlock icon in the menu bar.

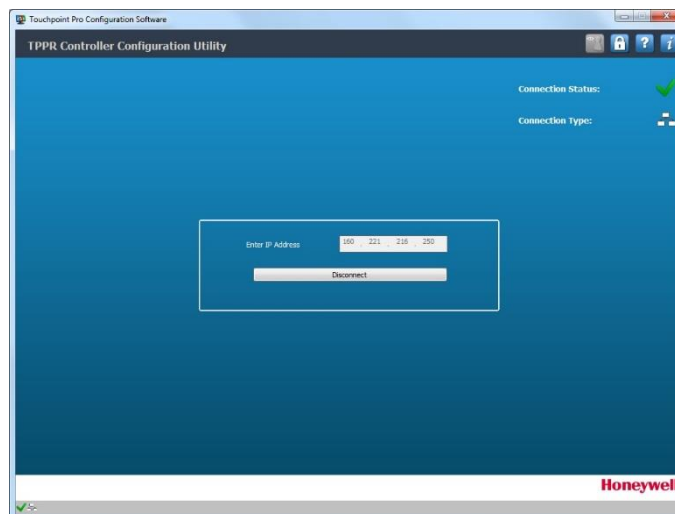
Confirm that you want to log out:



**Note:** The TPPR Controller's 'Remote Enable' icon setting automatically auto-disables when you log out or when someone uses the Touchscreen to change language or IP address.

**Note:** The program will automatically log out after a period of inactivity.

Click **Disconnect** if you have finished using PC Configuration:



Close the program.

---


# EXTRAS

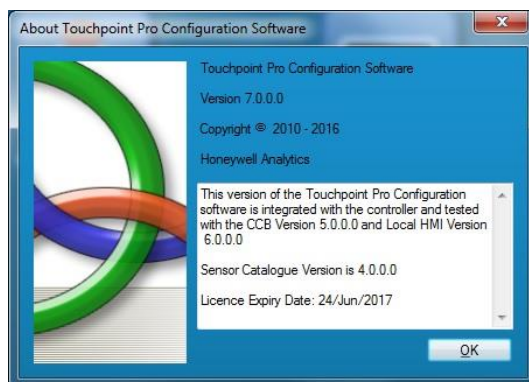
---

## 14. Extras

The following extras are available from the menu bar.

### 14.1 About Touchpoint Pro Configuration Software


Clicking the  button at any time will bring up information about the software:

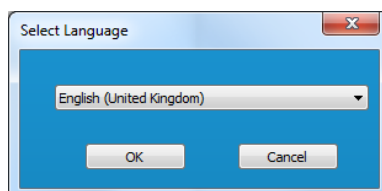


### 14.2 Help

Clicking the  button will open a searchable and printable copy of this guide in your configured language.

### 14.3 Changing Language

Clicking the  button *before connection* will allow you to choose the correct operating language:



Available Languages:

- Deutsch (Deutschland)
- English (UK)
- español (España)
- français (la France)
- italiano (Italia)
- Nederlands (Nederland)
- русский (Россия)

# EXTRAS

## 15. Troubleshooting

#	Problem	Solution
1	You cannot connect to the Touchpoint Pro	<p>Check:</p> <ul style="list-style-type: none"> <li>that you didn't disconnect or log out of your current session, which will have toggled the Remote Enable port to Disabled</li> <li>that the Touchpoint Pro TCP/IP is Enabled</li> <li>that the Remote Enable icon is <i>not</i> set to Disabled</li> <li>that you have entered the correct IP address</li> <li>that the network is operational and correctly configured</li> <li>that there are no error messages on the Touchscreen</li> <li>that the controller is not busy</li> </ul>
2	You cannot log in to the Touchpoint Pro	<p>Check:</p> <ul style="list-style-type: none"> <li>that you have entered the correct username and password.</li> <li>that your PC Configuration Licence is still valid</li> <li>that someone else is not already logged in</li> </ul>
3	The user was unexpectedly logged off and/or their edits were not saved	<ol style="list-style-type: none"> <li>The user may have been logged off by another user (e.g. at the Touchscreen). Wait or check before trying to log in.</li> <li>The session may have timed out due to prolonged inactivity.</li> <li>The 2-hour connection window might have elapsed.</li> <li>The TPPR may have power-cycled or had a change in core settings, which has closed the Remote Enable port.</li> </ol> <p>Go to the Touchscreen, log in as Administrator or Engineer, navigate to the TCP/IP settings, touch the 'Remote Enable' icon, Enable the port for 2 hours, log out, and then use PC Configuration to reconnect and log back in (within 2 hours).</p>
4	A PC's connection to Touchpoint Pro was unexpectedly terminated	<ol style="list-style-type: none"> <li>The connection may have timed out due to prolonged inactivity. Try to reconnect if you still require access.</li> </ol> <p>If unsuccessful, check the Touchscreen for error messages.</p> <ol style="list-style-type: none"> <li>The TPPR 2-hour remote connection time limit may have elapsed, or someone else has pressed the Disable button.</li> <li>The TPPR may have power-cycled or had a change in core settings e.g. language change, which has closed the Remote Enable port.</li> </ol> <p>Go to the Touchscreen, log in as Administrator or Engineer, navigate to the TCP/IP settings, touch the 'Remote Enable' icon, Enable the port for 2 hours, log out, and then use PC Configuration to reconnect and log back in (within 2 hours).</p>
5	<p>Error Message on the Touchscreen:</p> <pre>The System has detected a conflict for statically assigned IP address *** *** *** *** and with the system having hardware address ** ** ** * * * *. The local interface has been disabled.</pre>	<p>PC Configuration cannot establish (or loses) contact because the Touchpoint Pro Static IP address is in conflict with the IP of the named machine. (This may happen when Touchpoint Pro's power is switched on or the CCB is power recycled.)</p> <p>Disconnect the conflicting machine or change one of the IPs then re-enable the Touchpoint Pro TCP/IP connection using the Touchscreen.</p> <p>Allow time for the new Touchpoint Pro connection to establish before clicking <b>Save</b>.</p>

Find out more at

[www.honeywellanalytics.com](http://www.honeywellanalytics.com)

**Contact Honeywell Analytics:**

**Europe, Middle East, Africa**

Life Safety Distribution GmbH

Javastrasse 2

8604 Hegnau

Switzerland

Tel: +41 (0)44 943 4300

Fax: +41 (0)44 943 4398

[gasdetection@honeywell.com](mailto:gasdetection@honeywell.com)

**Customer Service**

Tel: 00800 333 222 44 (Freephone number)

Tel: +41 44 943 4380 (Alternative number)

Fax: 00800 333 222 55

Middle East Tel: +971 4 450 5800 (Fixed Gas Detection)

Middle East Tel: +971 4 450 5852 (Portable Gas Detection)

**Americas**

Honeywell Analytics Inc.

405 Barclay Blvd.

Lincolnshire, IL 60069

USA

Tel: +1 847 955 8200

Toll free: +1 800 538 0363

Fax: +1 847 955 8210

[detectgas@honeywell.com](mailto:detectgas@honeywell.com)

**Asia Pacific**

Honeywell Analytics Asia Pacific

7F SangAm IT Tower,

434 Worldcup Buk-ro, Mapo-gu,

Seoul 03922,

Korea

Tel: +82 (0)2 6909 0300

Fax: +82 (0)2 2025 0328

India Tel: +91 124 4752700

[analytics.ap@honeywell.com](mailto:analytics.ap@honeywell.com)

**Please Note:**

While every effort has been made to ensure accuracy in this publication, no responsibility can be accepted for errors or omissions. Data may change as well as legislation and you are strongly advised to obtain copies of the most recently issued regulations, standards and guidelines. This publication is not intended to form the basis of a contract.

**Technical Services**

EMEA: [HAexpert@honeywell.com](mailto:HAexpert@honeywell.com)

US: [ha.us.service@honeywell.com](mailto:ha.us.service@honeywell.com)

AP: [ha.ap.service@honeywell.com](mailto:ha.ap.service@honeywell.com)

[www.honeywell.com](http://www.honeywell.com)



Part Number 2400M2564

Issue 5

© 2019 Honeywell Analytics



**D**ETECTION | **S**AFETY | **P**ROTECTION

For Pricing or Further  
Information Please Contact Us.



**+441158390495**



**[www.manonglobal.com](http://www.manonglobal.com)**



**[sales@manonglobal.com](mailto:sales@manonglobal.com)**

---

**Leading UK Suppliers In  
Gas Detection, Safety & Protection  
Products  
Brand New & Genuine OEM Parts  
UK & Worldwide Deliveries Available**



Worldwide Delivery



1000+ Genuine Parts & Equipment